



exotile

300x450 MM



KITCHEN || **300x450 MM**
DIGITAL WALL TILES



exotile

DEFINING NEW

Creativity

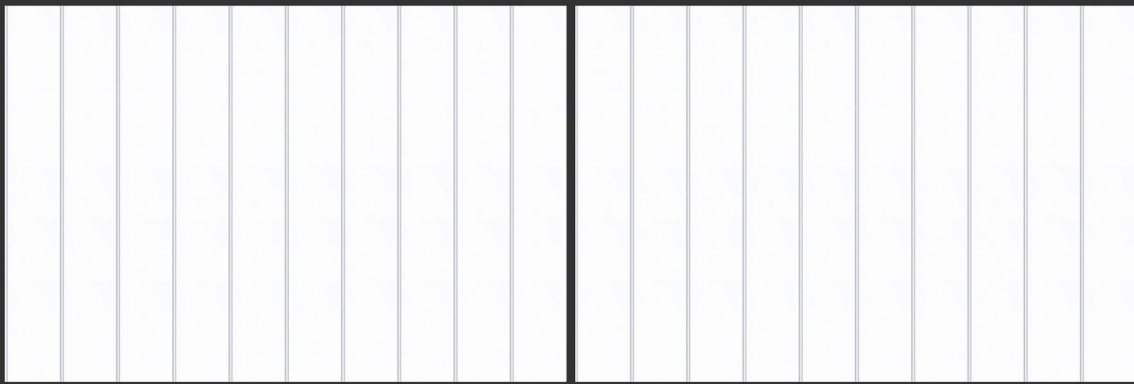
FOR FOREVER SPACE.

When creativity seems to beckon, how can you indulge in idle pleasures? come closer to the world of digital wall tiles. we design to synchronise the functioning and vibrancy of your home, pepping up your walls to be visually welcoming.

Surface

OF TRUE FEELINGS

our diverse range of tiles are so lucid and encompassing that you could never stop loving your wall. their lovingly smooth textures and tender soothing colours, transform your home into a cocoon of comfort. live more happily surrounded by beautiful, luxurious satiny tiles.



3002-LT



3002-HL-1



3002-HL-2



3002-LT



300x450 mm
WALL TILES



3005-LT

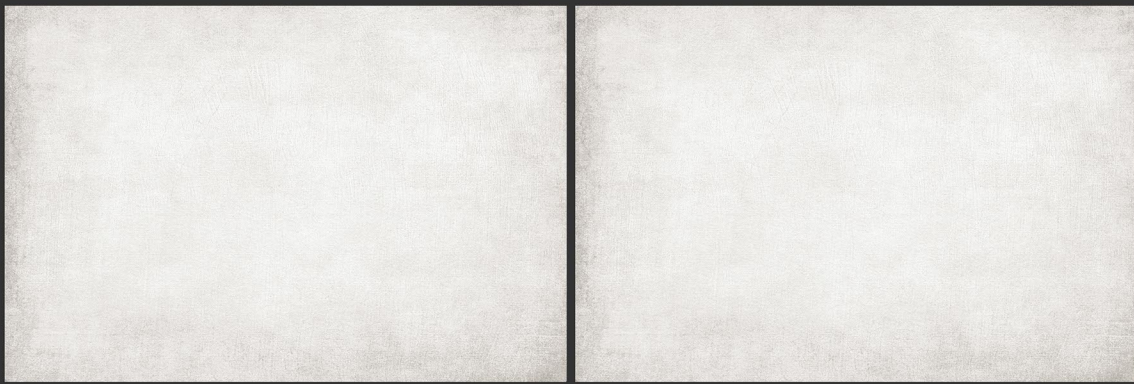
3005-HL-1&2

3005-HL-3&4

3005-DK

300x450 mm
WALL TILES

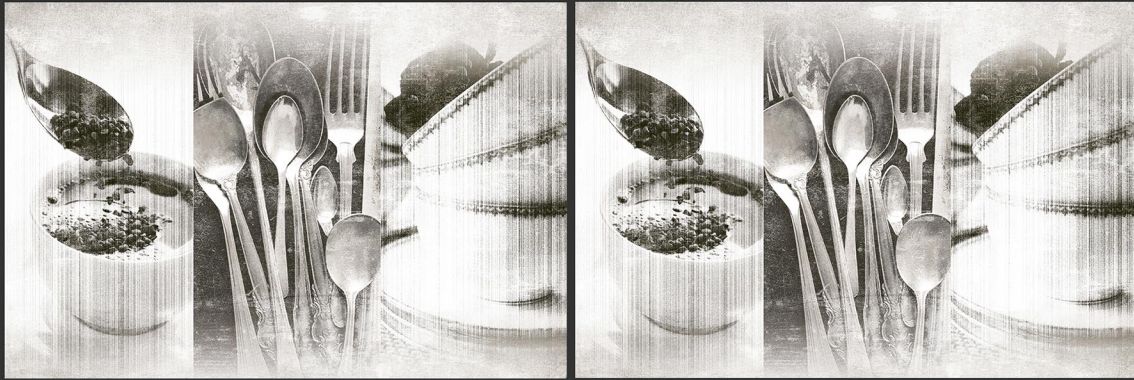




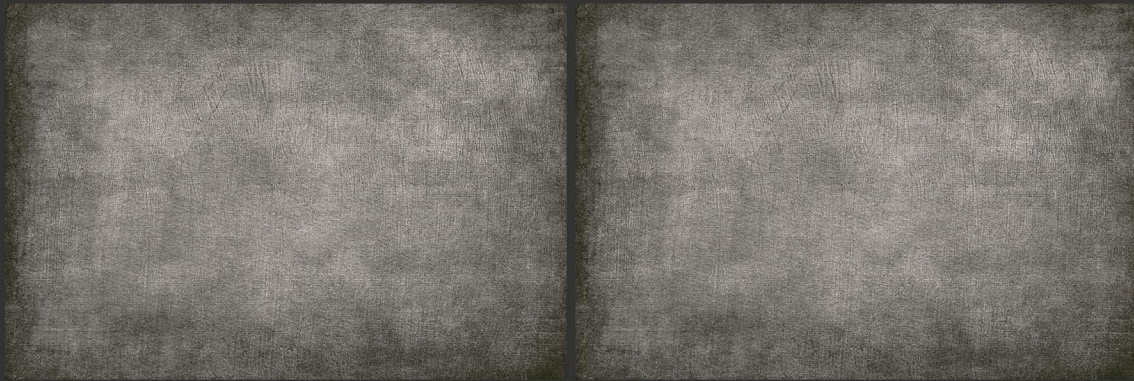
3010-LT



3010-HL-1



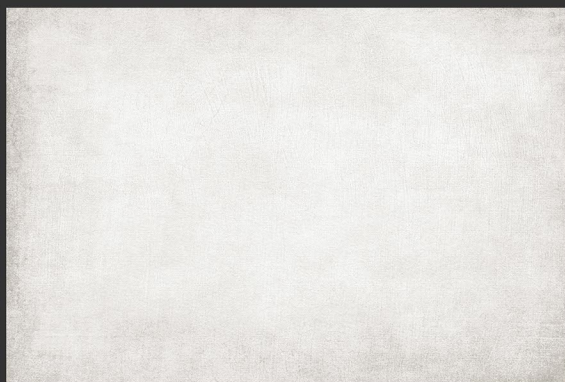
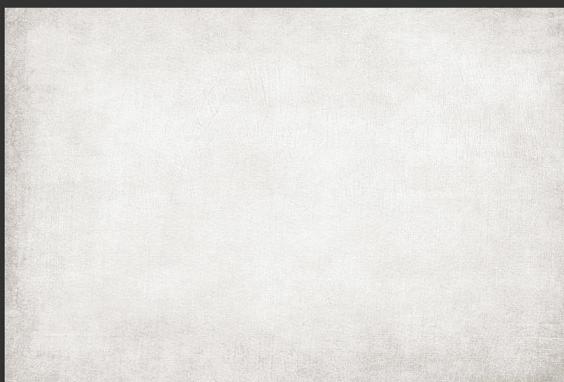
3010-HL-2



3010-DK

300x450 mm
WALL TILES





3010-LT



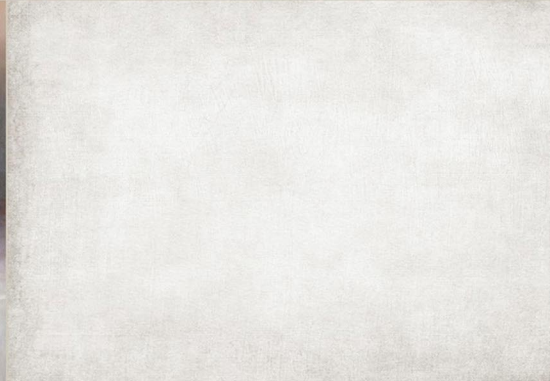
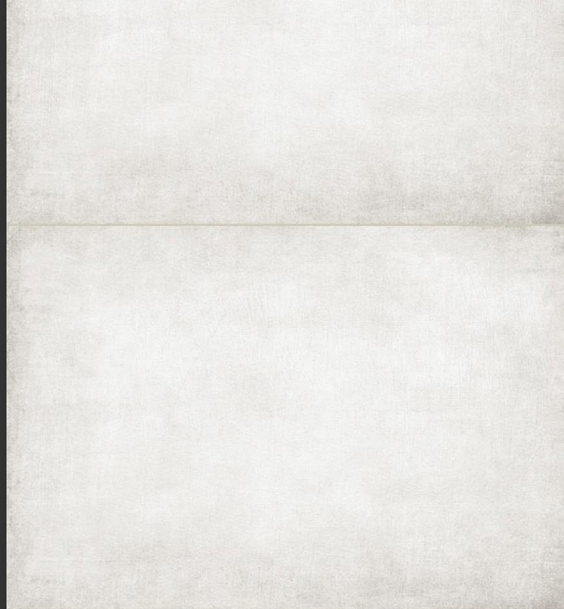
3010-HL-3&4



3010-HL-5&6

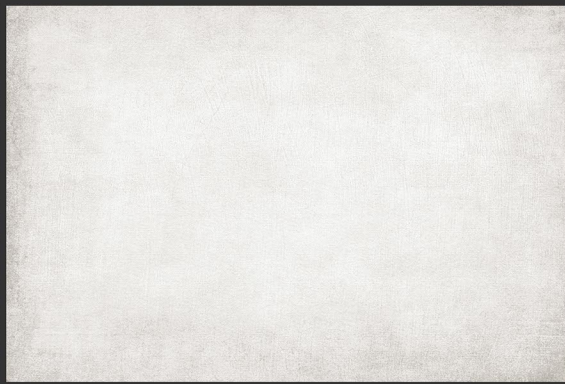


3010-DK



300x450 mm
WALL TILES





3010-LT



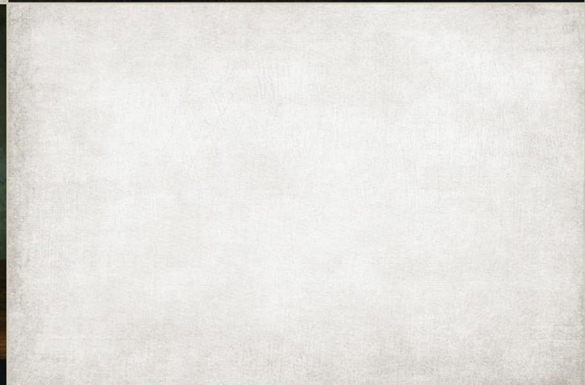
3010-HL-7&8



3010-HL-9&10

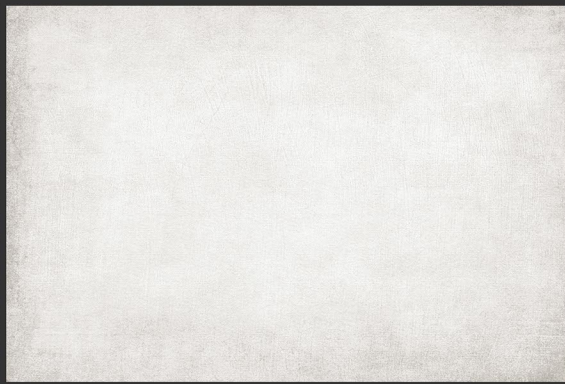


3010-DK



300x450 mm
WALL TILES

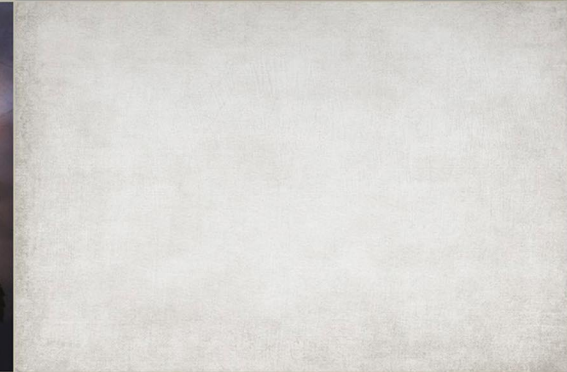




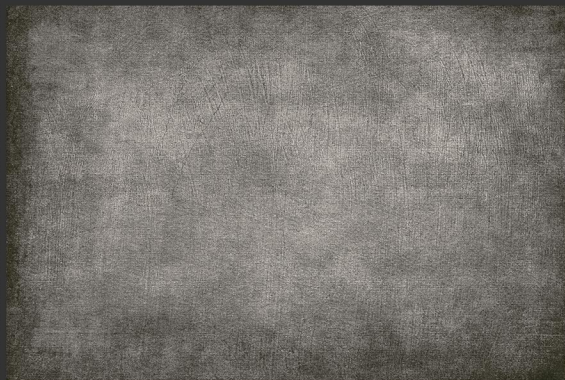
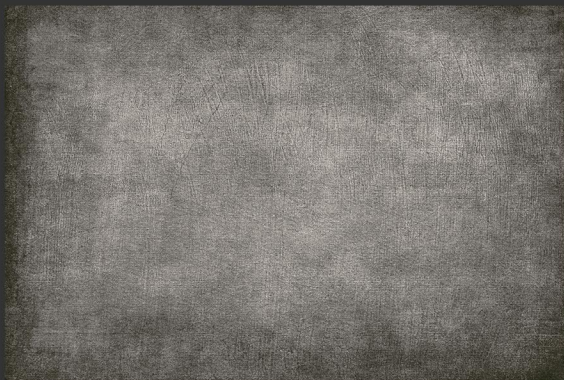
3010-LT



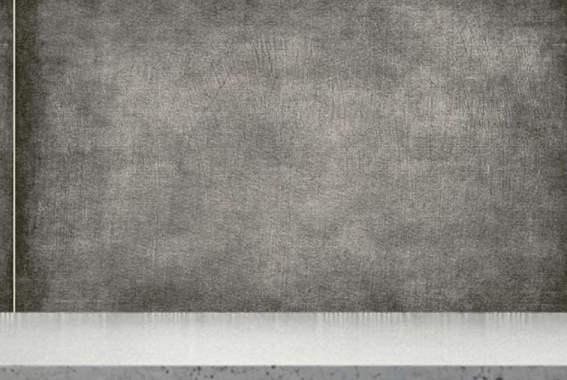
3010-HL-11&12



3010-HL-13&14

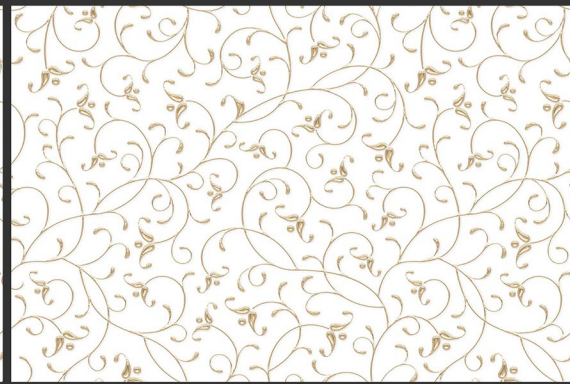


3010-DK



300x450 mm
WALL TILES





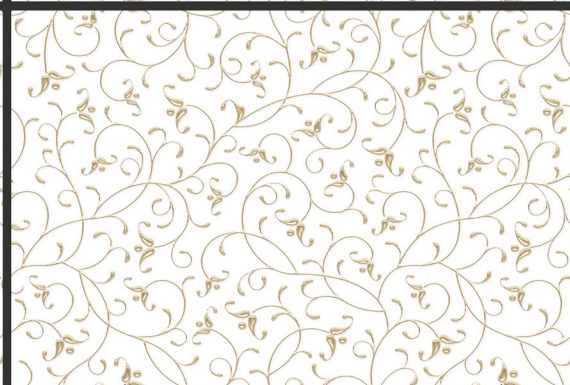
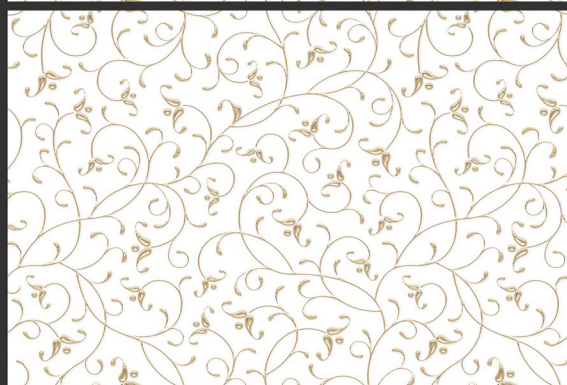
3016-LT



3016-HL-1



3016-HL-2



3016-LT



300x450 mm
WALL TILES



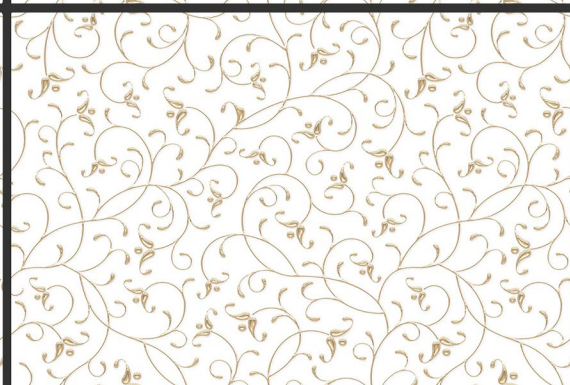
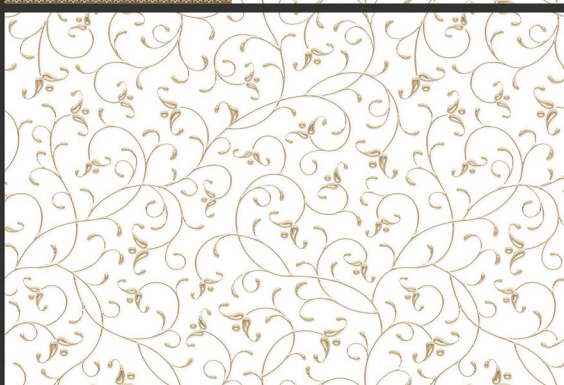
3016-LT



3016-HL-3&4



3016-HL-5&6



3016-LT



300x450 mm
WALL TILES



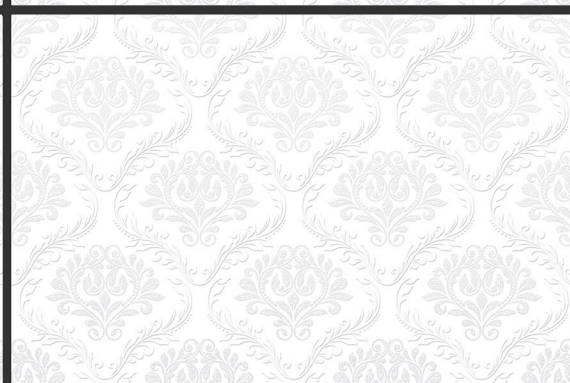
3018-LT



3018-HL-1

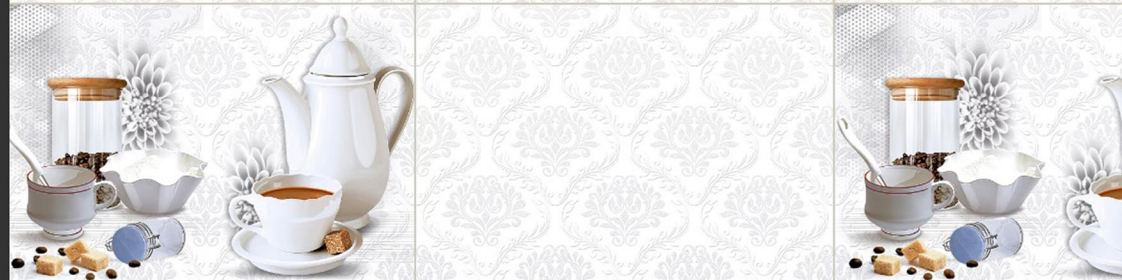
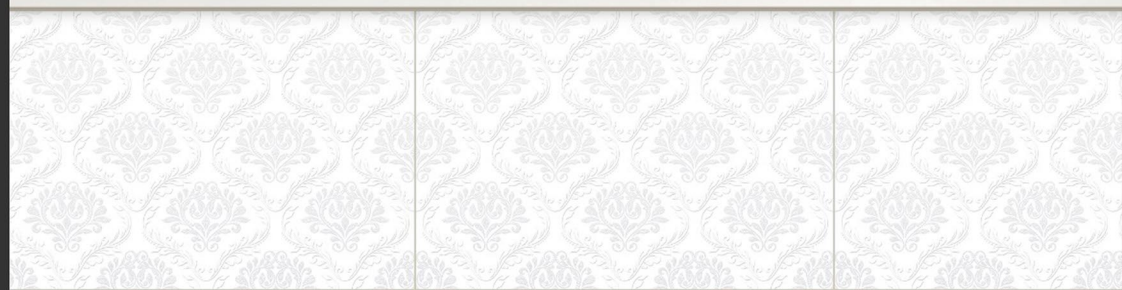


3018-HL-2



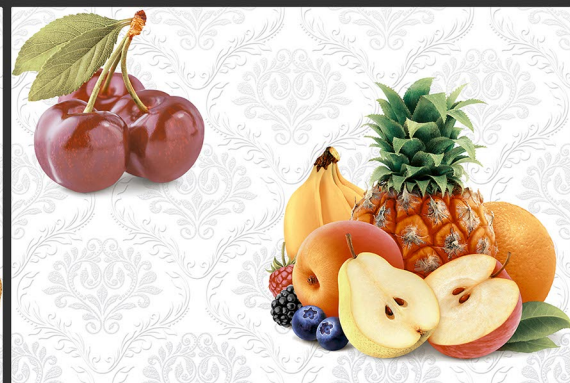
3018-LT

300x450 mm
WALL TILES





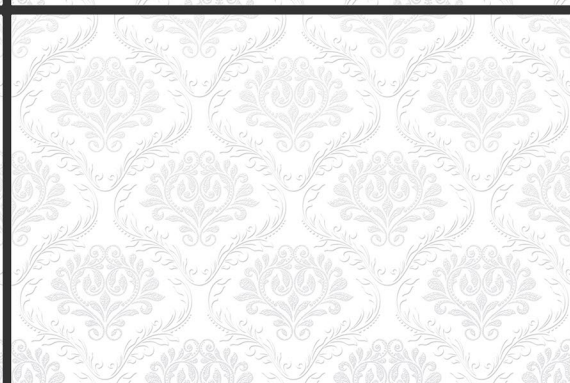
3018-LT



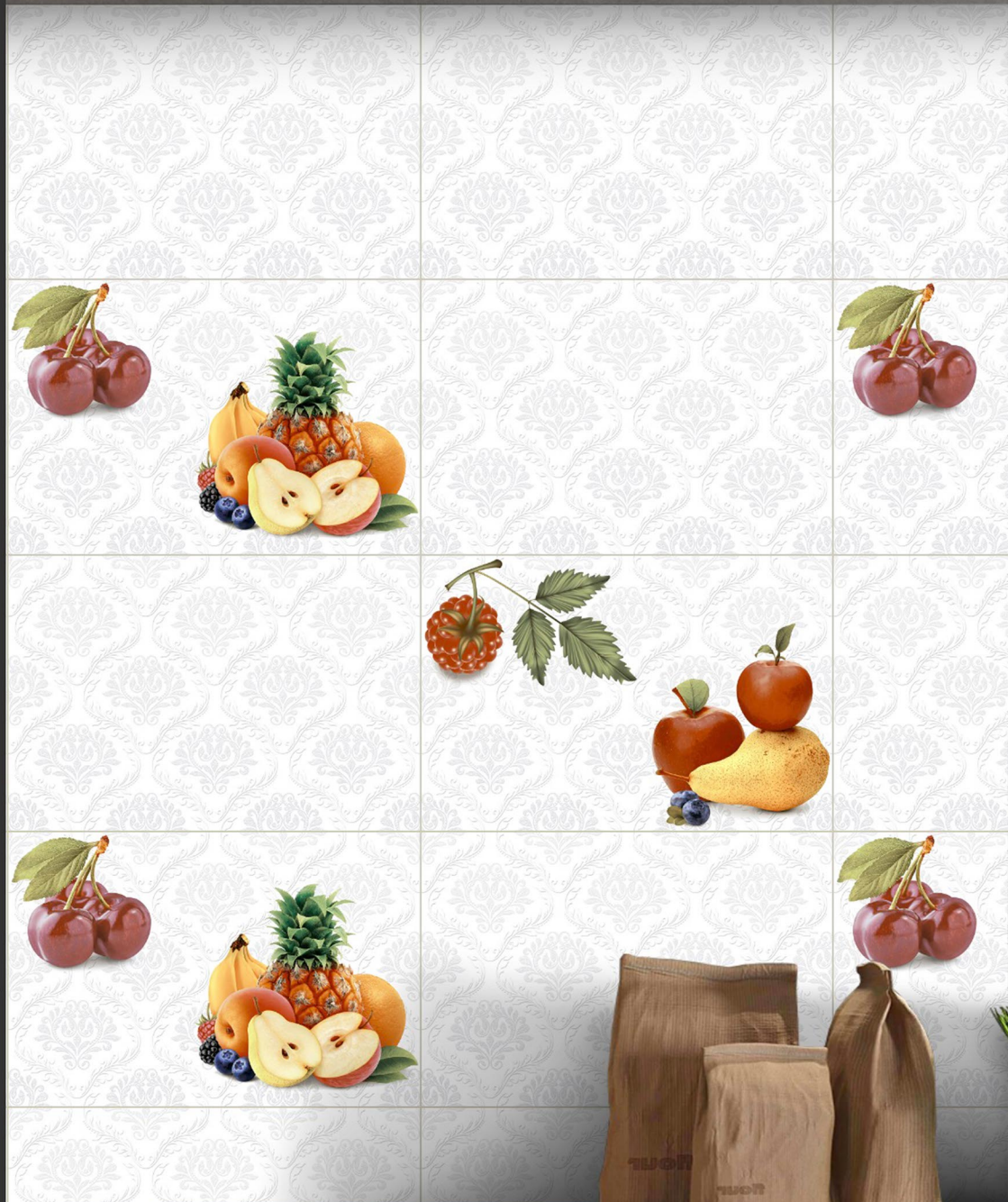
3018-HL-3&4



3018-HL-5&6



3018-LT



300x450 mm
WALL TILES



3026-LT



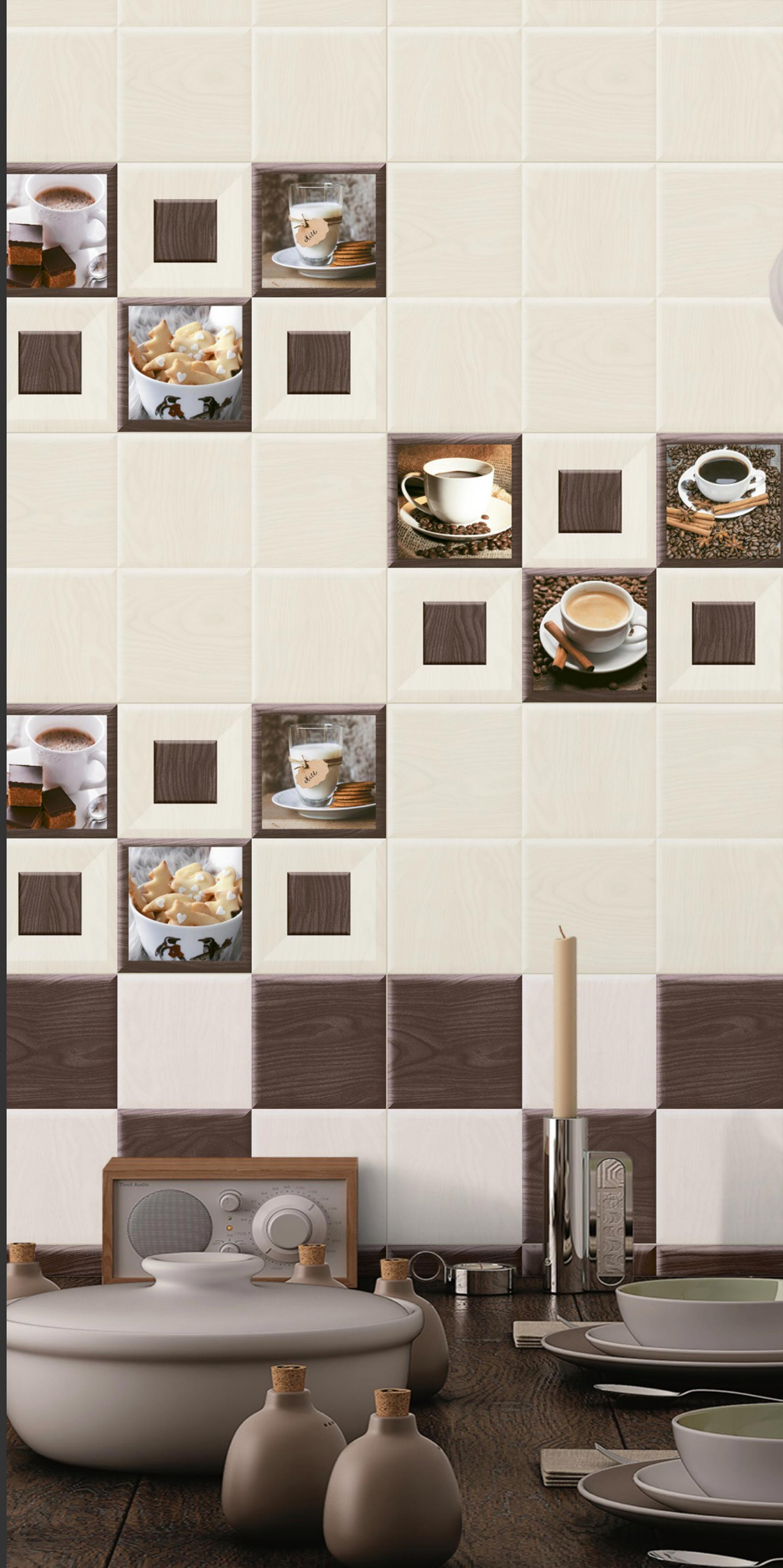
3026-HL-1&2



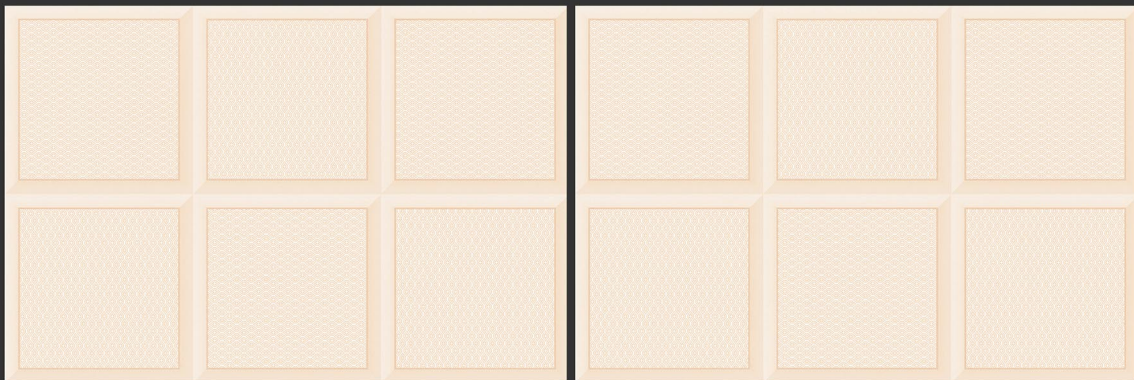
3026-HL-3&4



3026-DK



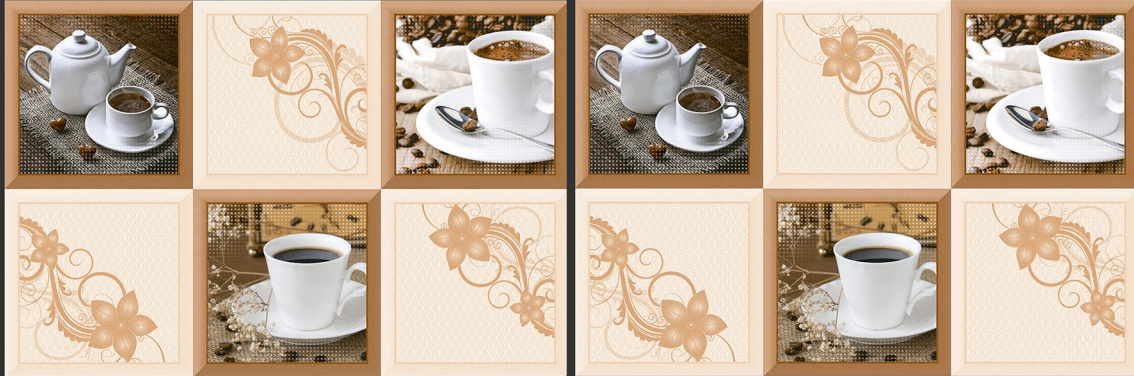
300x450 mm
WALL TILES



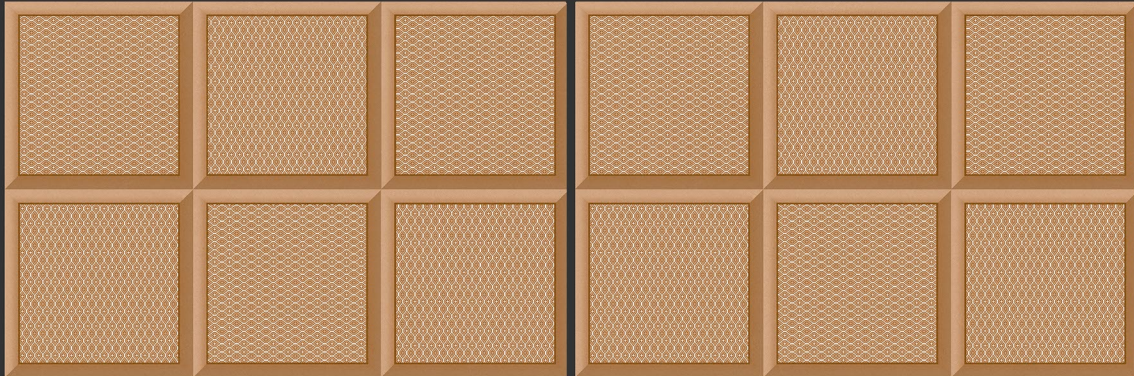
3030-LT



3030-HL-1



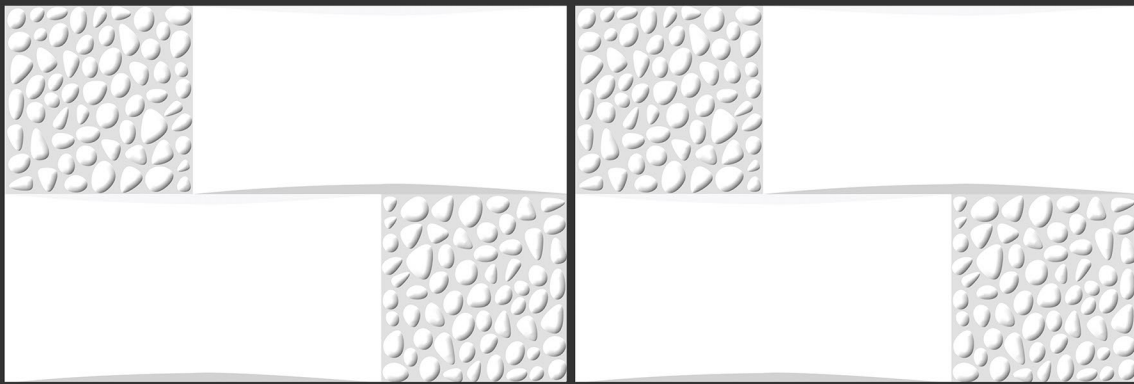
3030-HL-2



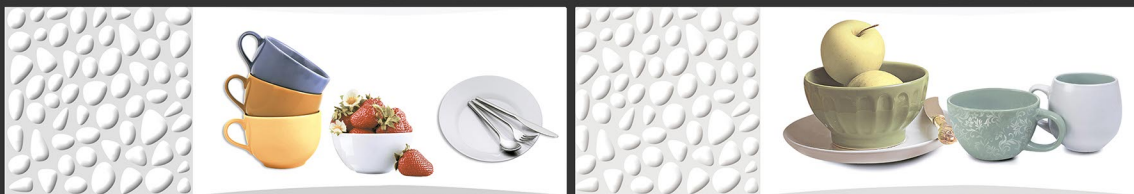
3030-DK



300x450 mm
WALL TILES



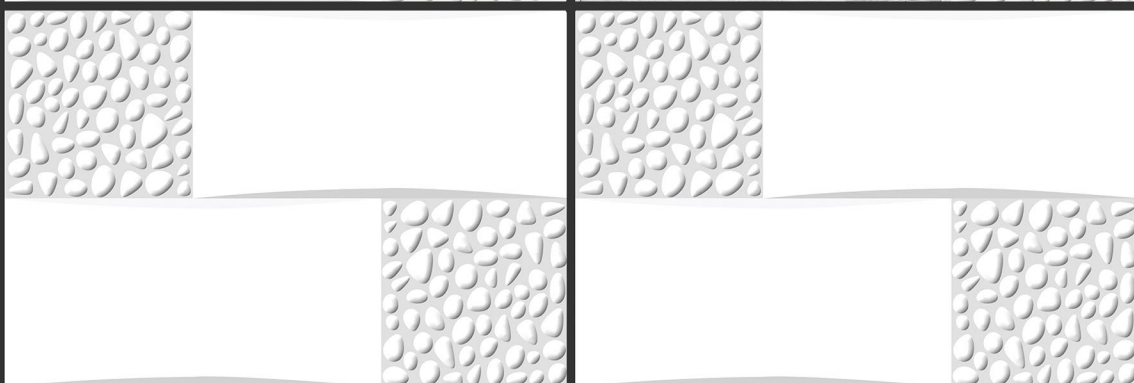
3031-LT



3031-HL-1&2



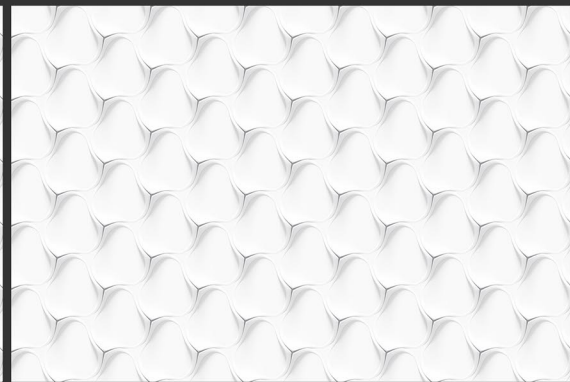
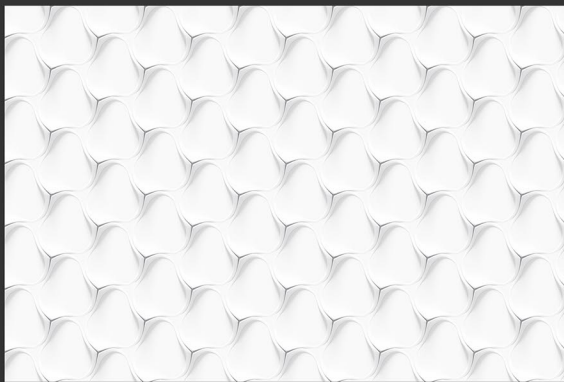
3031-HL-3&4



3031-LT



300x450 mm
WALL TILES



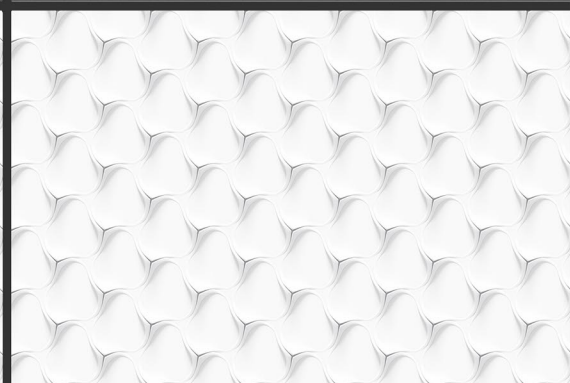
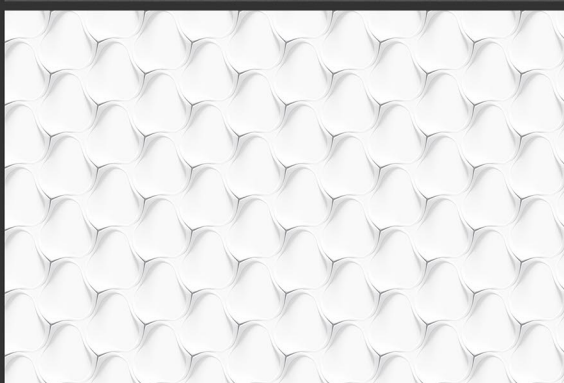
3034-LT



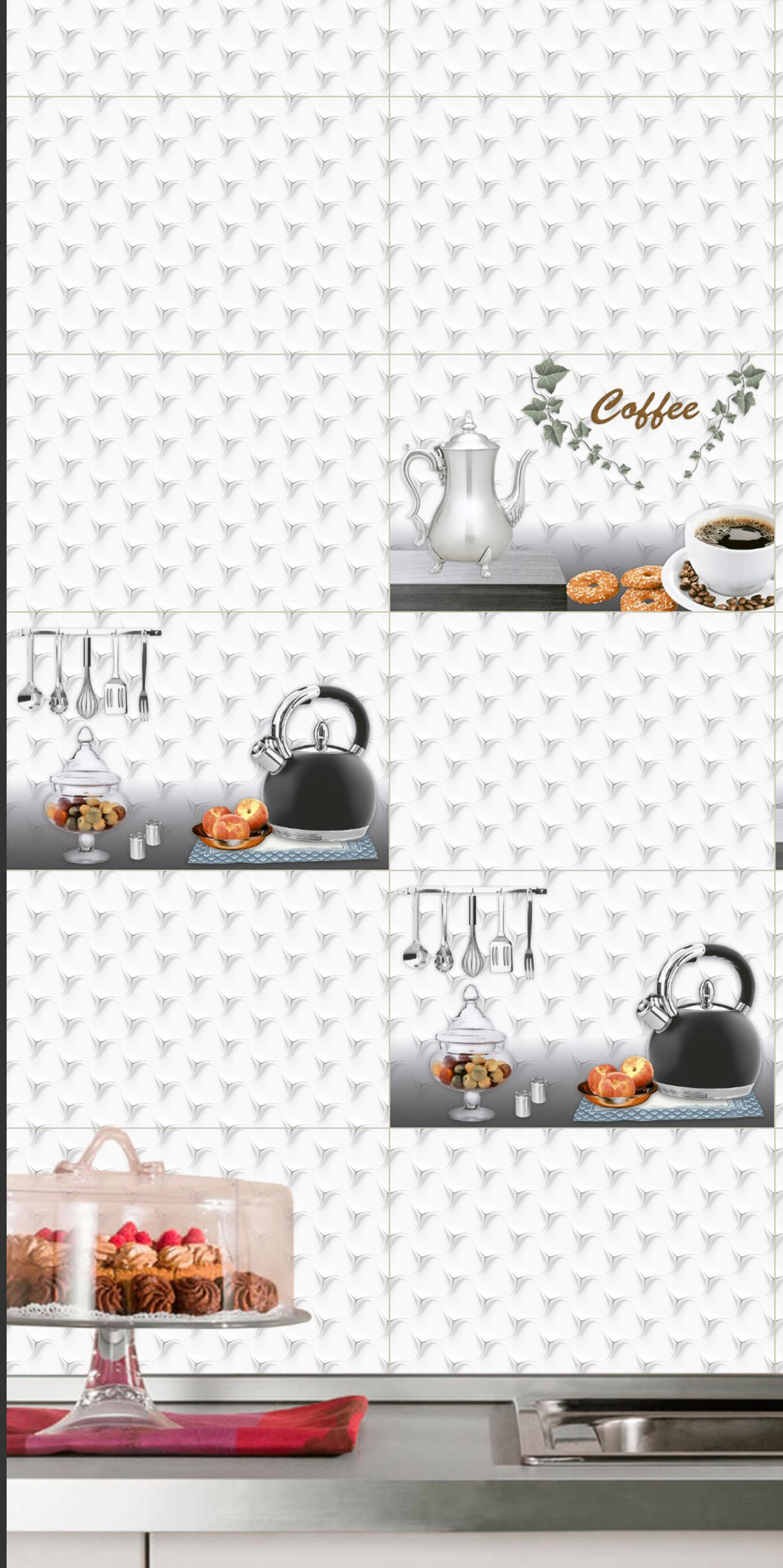
3034-HL-1



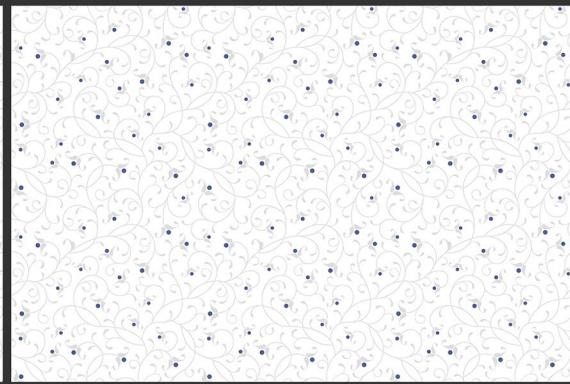
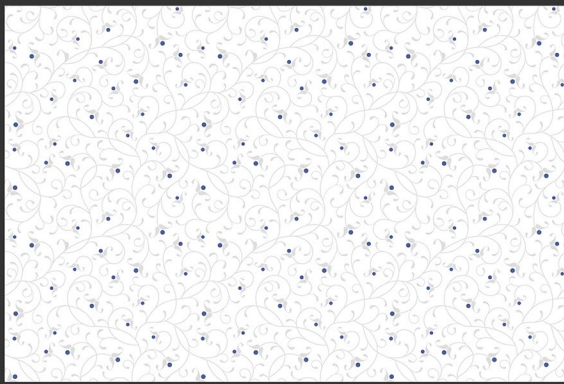
3034-HL-2



3034-LT



300x450 mm
WALL TILES



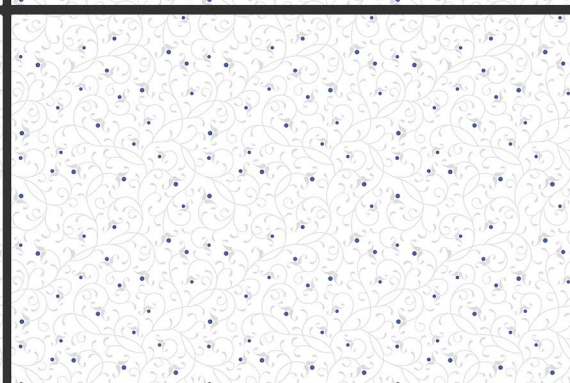
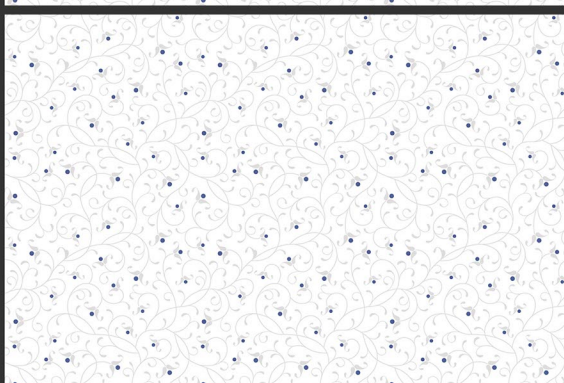
3043-LT



3043-HL-1



3043-HL-2



3043-LT



300x450 mm
WALL TILES



3046-LT

3046-HL-1&2

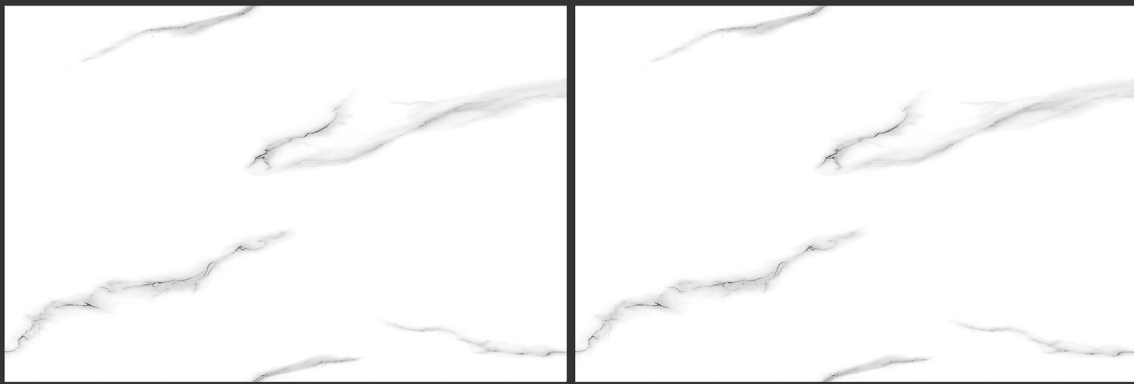
3046-HL-3

3046-HL-4&5

3046-DK

300x450 mm
WALL TILES





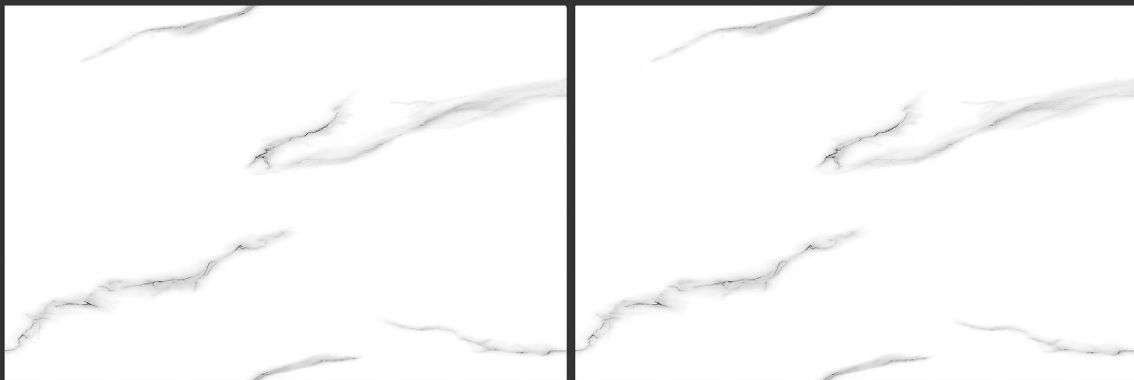
3050-LT



3050-HL-1



3050-HL-2

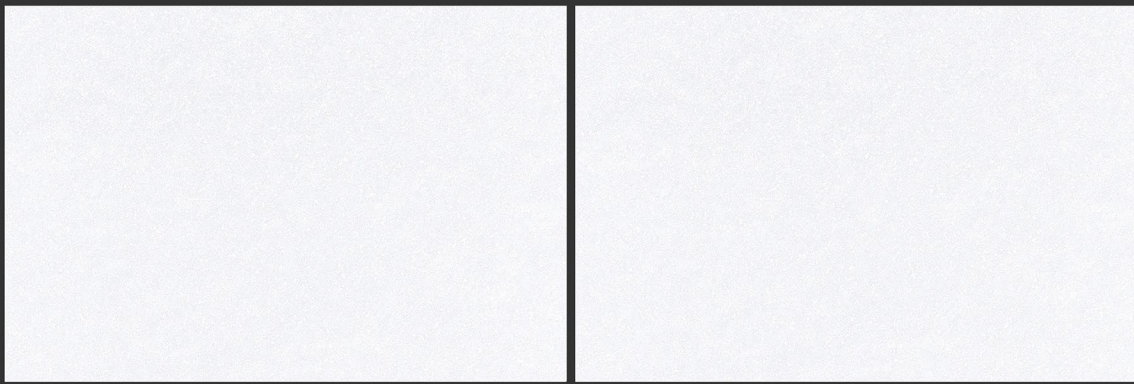


3050-LT



300x450 mm
WALL TILES





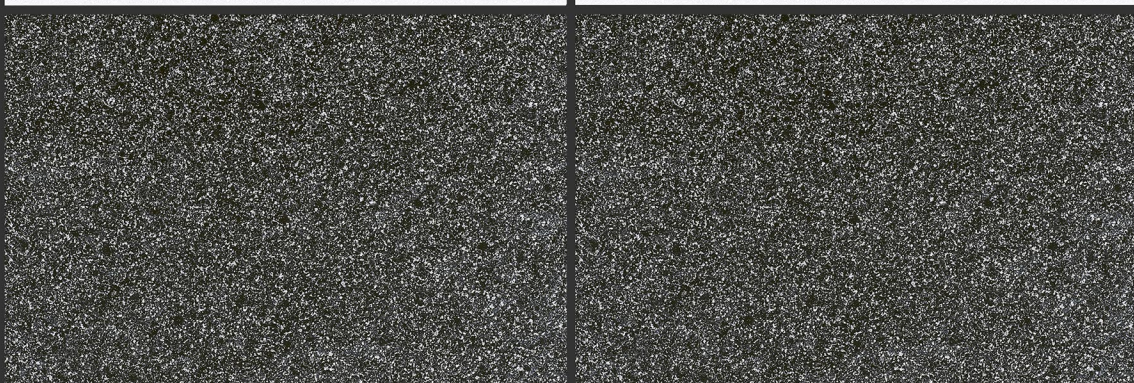
3052-LT



3052-HL-1



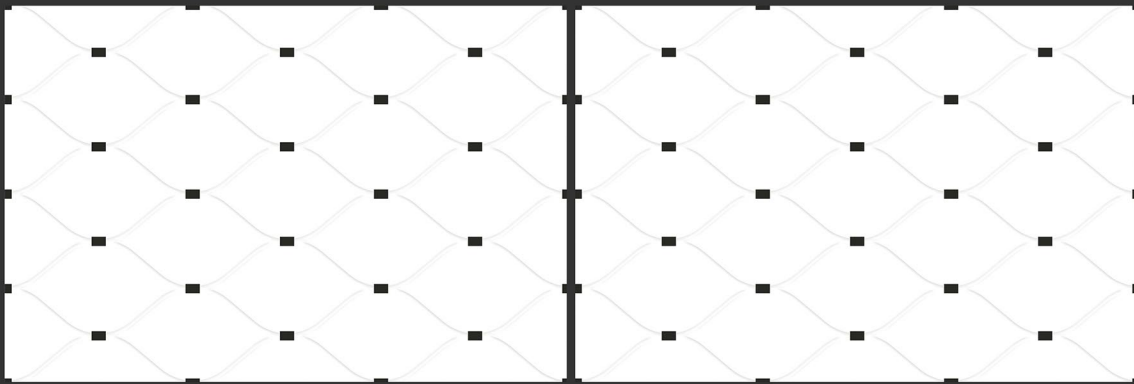
3052-HL-1



3052-DK



300x450 mm
WALL TILES



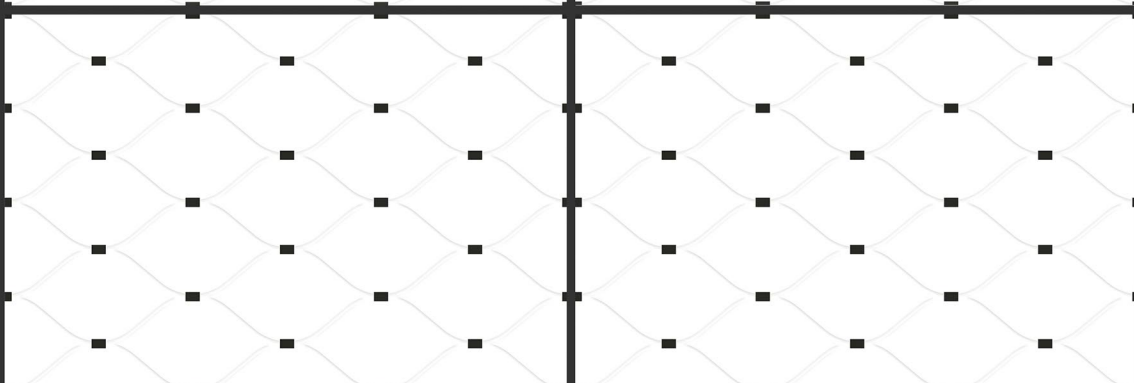
3053-LT



3053-HL-1



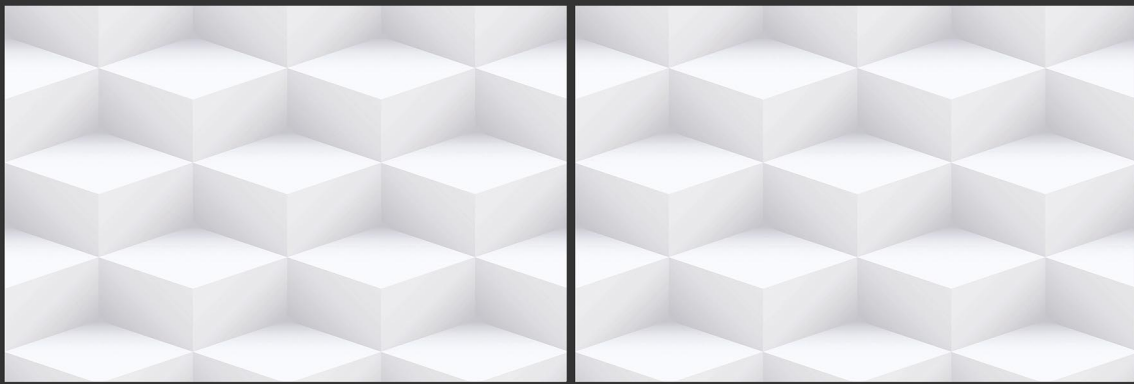
3053-HL-1



3053-LT



300x450 mm
WALL TILES



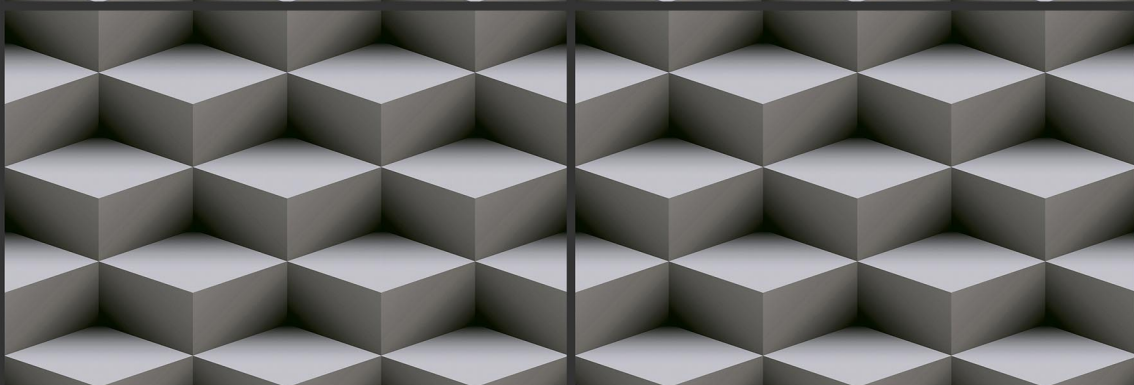
3054-LT



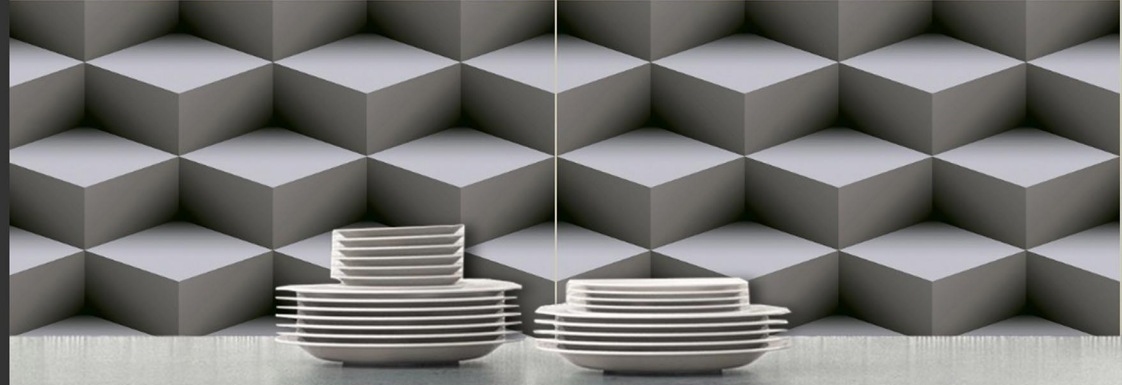
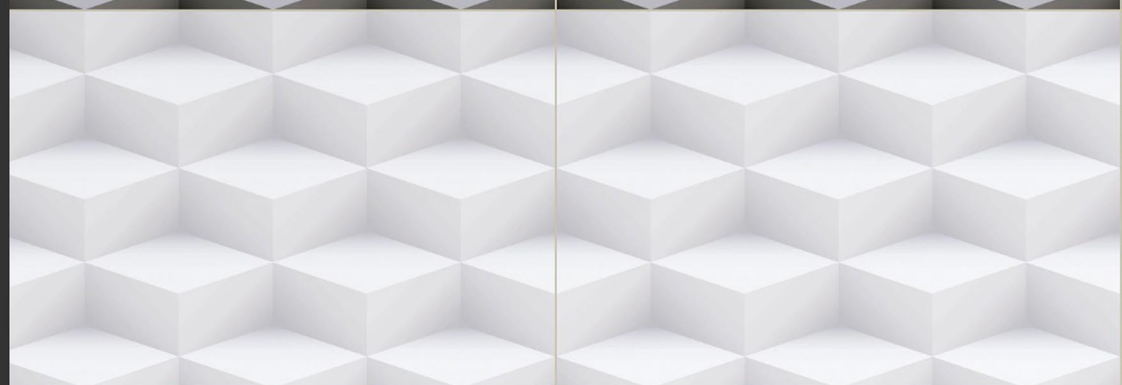
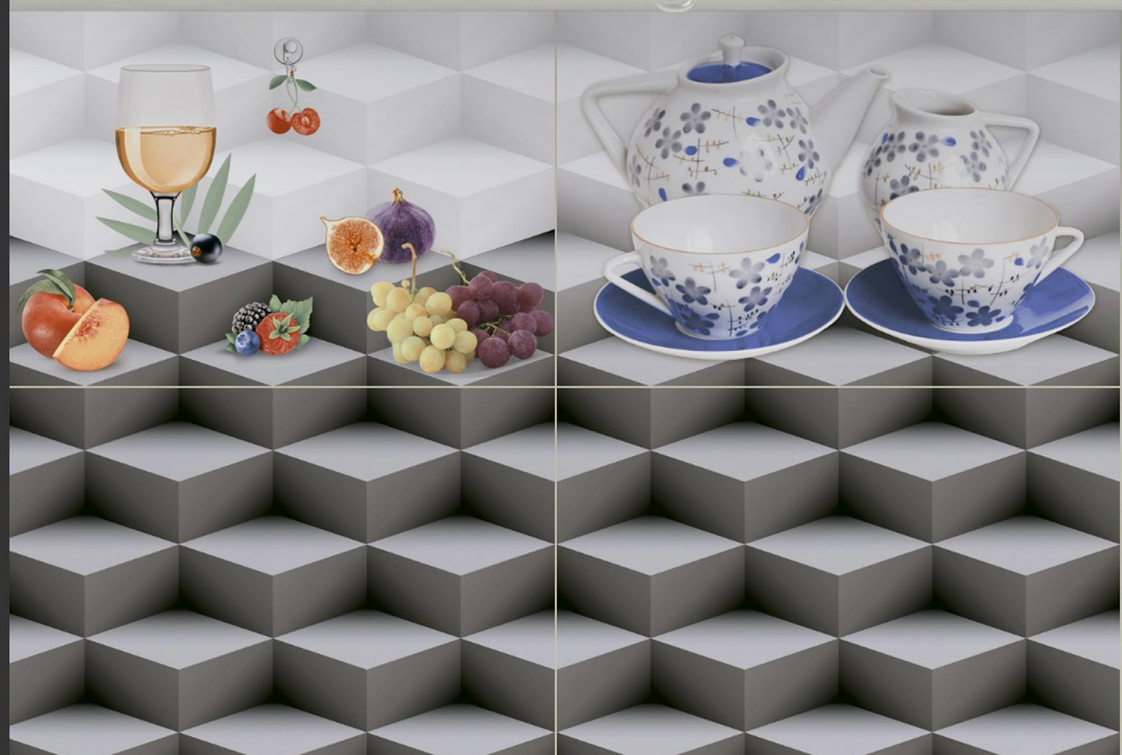
3054-HL-1&2



3054-HL-3&4



3054-DK



300x450 mm
WALL TILES





3055-LT



3055-HL-1



3055-HL-2



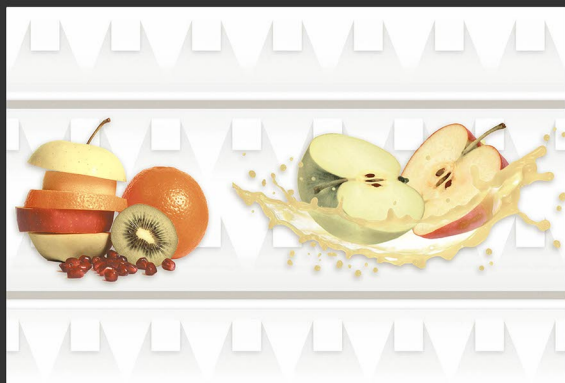
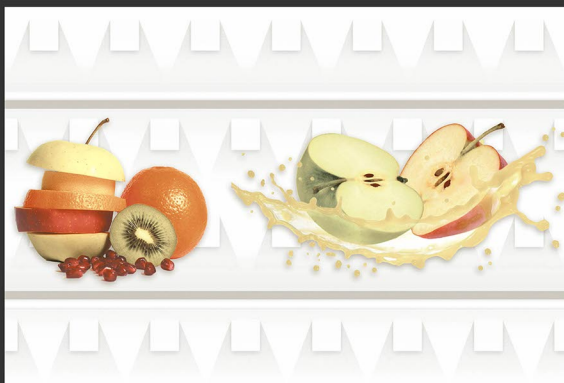
3055-LT



300x450 mm
WALL TILES



3055-LT



3055-HL-3



3055-HL-4



3055-HL-5



300x450 mm

WALL TILES



3058-LT



3058-HL-1&2



3058-HL-3&4



3058-LT

300x450 mm
WALL TILES





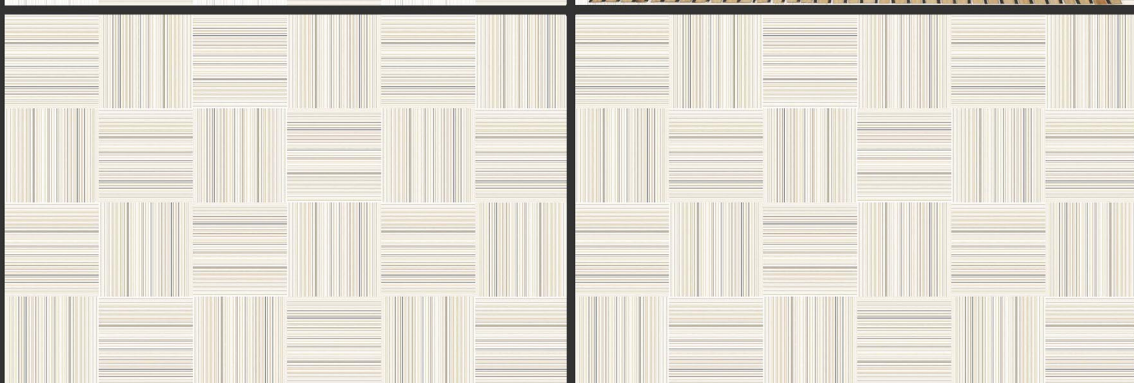
3059-LT



3059-HL-1&2



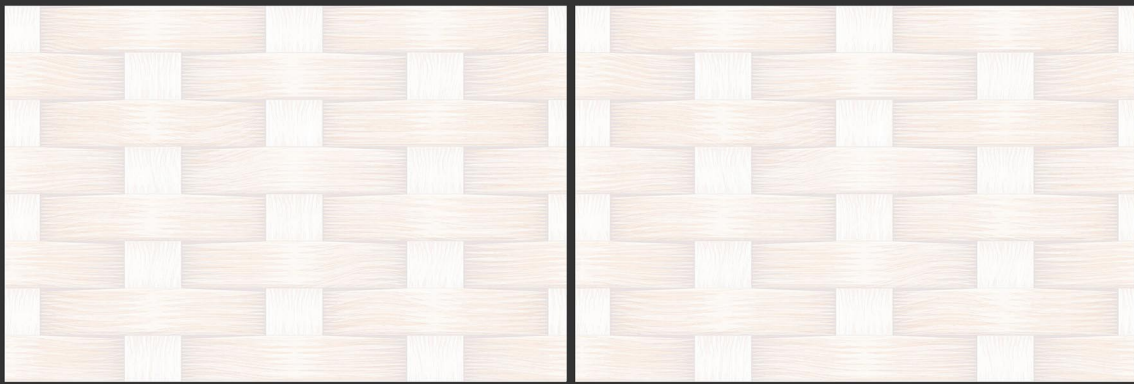
3059-HL-3&4



3059-DK



300x450 mm
WALL TILES



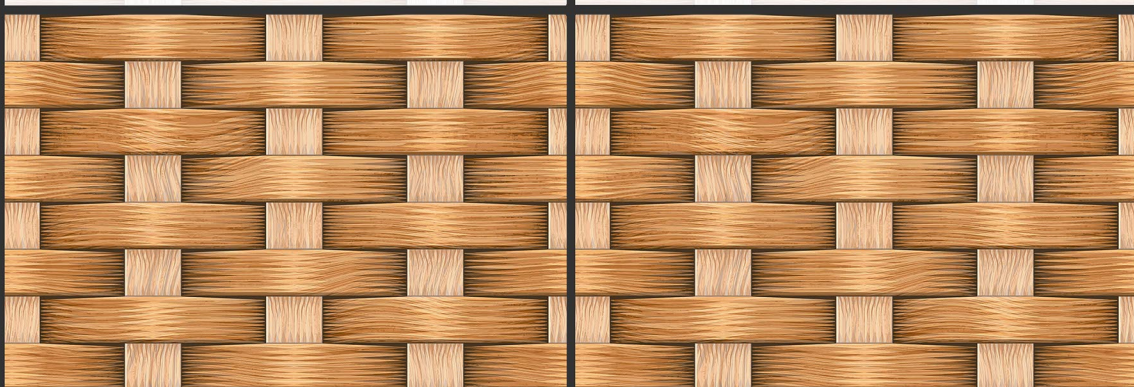
3060-LT



3060-HL-1



3060-HL-2



3060-DK

300x450 mm
WALL TILES





3062-LT



3062-HL-1&2



3062-HL-3&4



3062-DK



300x450 mm
WALL TILES



3067-LT

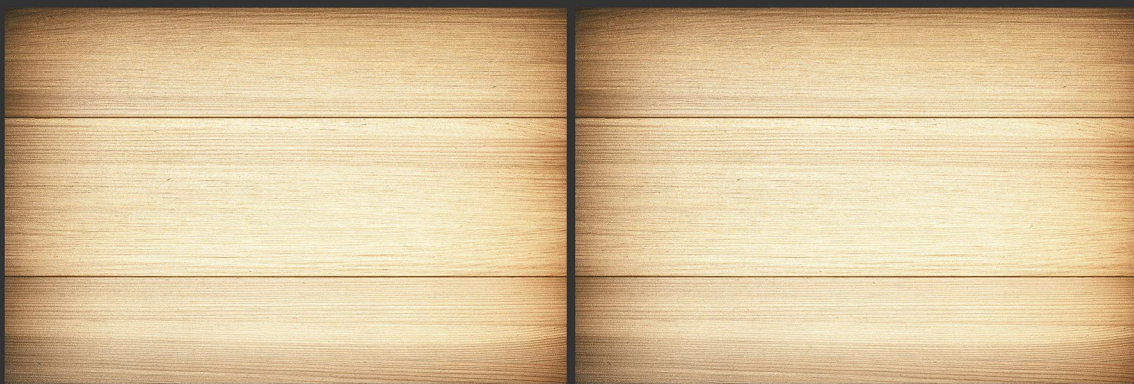
3067-HL-1

3067-HL-2

3067-LT



300x450 mm
WALL TILES



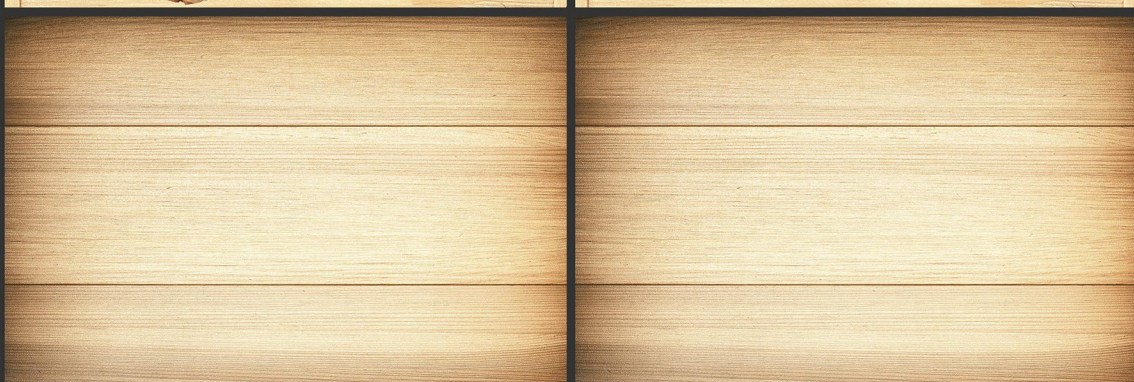
3069-LT



3069-HL-1&2



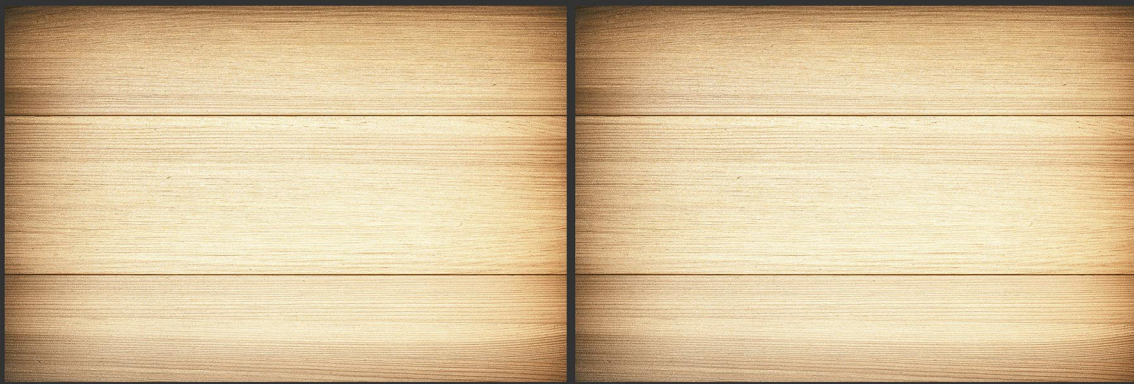
3069-HL-3&4



3069-LT



300x450 mm
WALL TILES



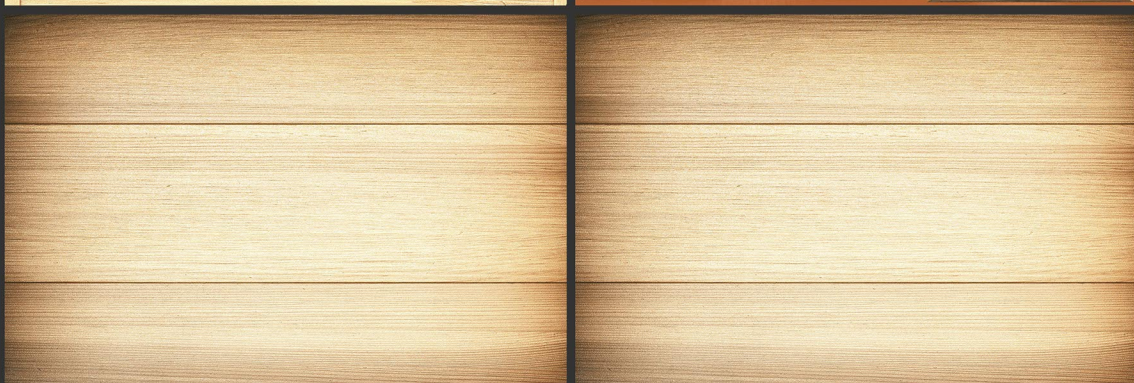
3069-LT



3069-HL-5&6



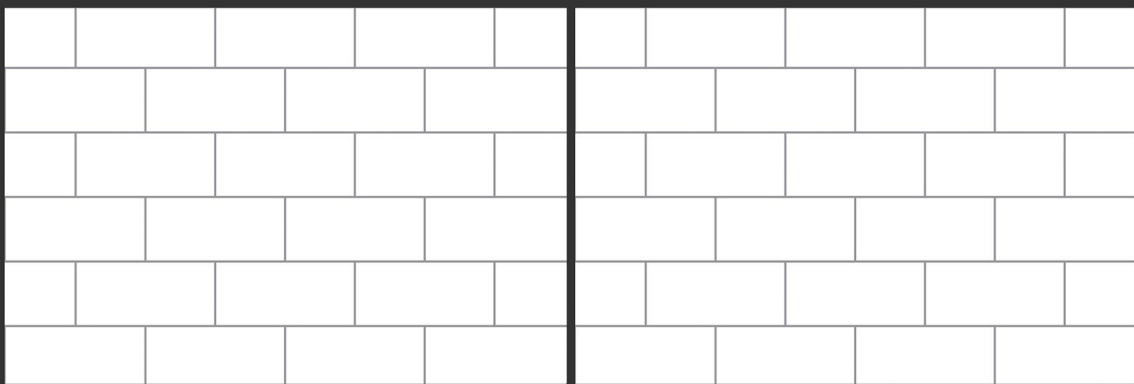
3069-HL-7&8



3069-LT



300x450 mm
WALL TILES



3070-LT



3070-HL-1



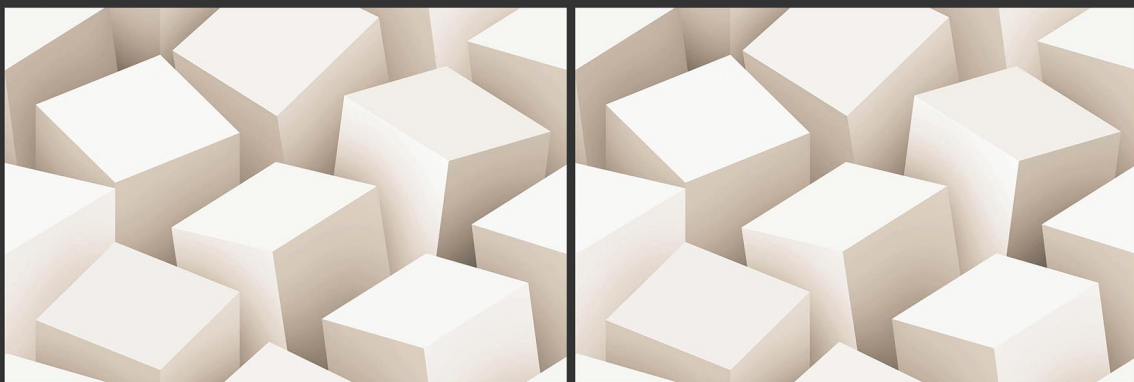
3070-HL-2



3070-HL-3



300x450 mm
WALL TILES



3071-LT



3071-HL-1



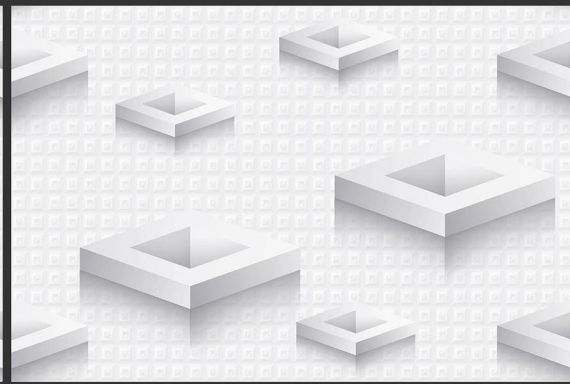
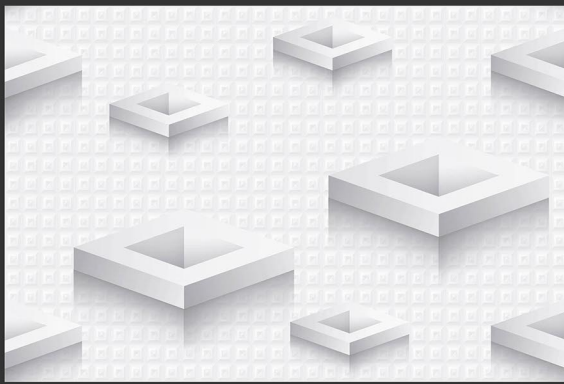
3071-HL-2



3071-HL-3



300x450 mm
WALL TILES



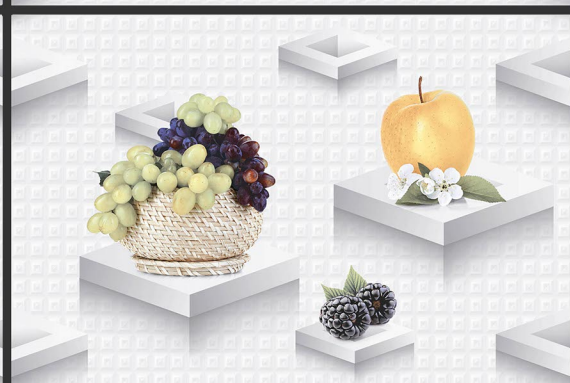
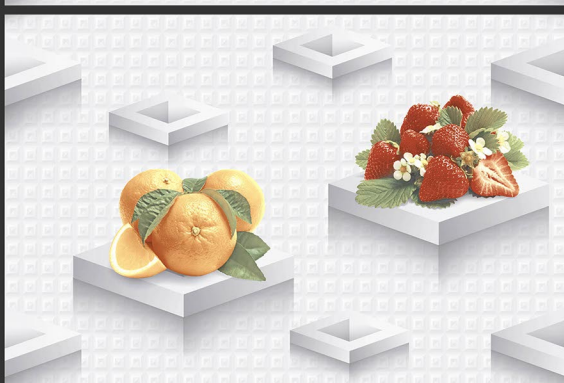
3072-LT



3072-HL-1&2



3072-HL-3&4

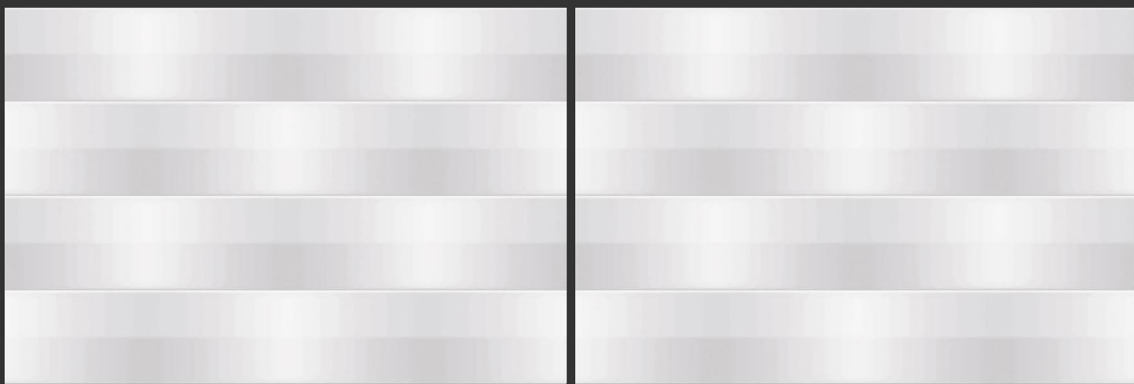


3072-HL-5&6



300x450 mm

WALL TILES



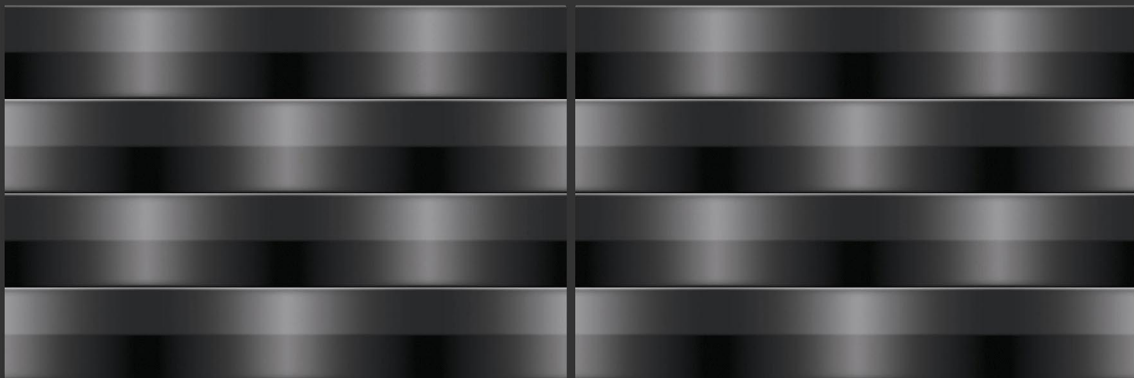
3075-LT



3075-HL-1&2



3075-HL-3&4



3075-DK



300x450 mm
WALL TILES



3076-LT

3076-HL-1&2

3076-HL-3&4

3076-DK

300x450 mm

WALL TILES





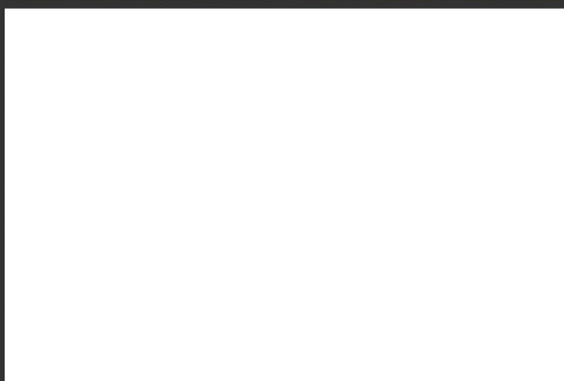
WHITE



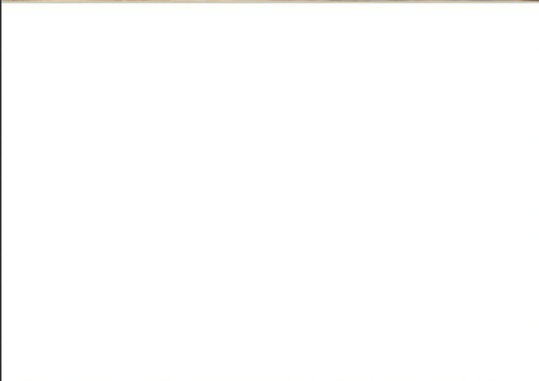
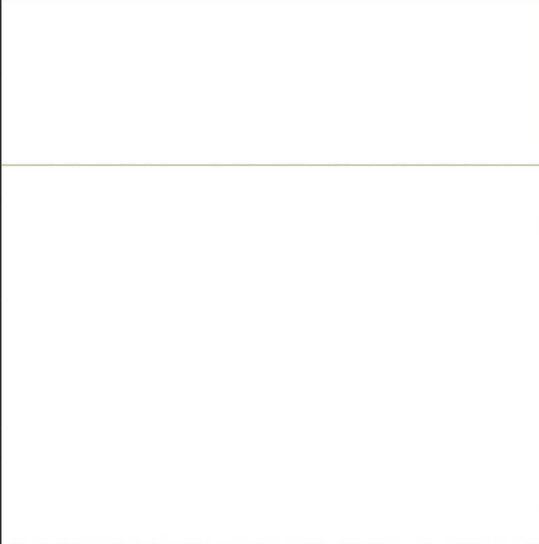
3079-HL-1&2



3079-HL-3&4



WHITE



300x450 mm
WALL TILES





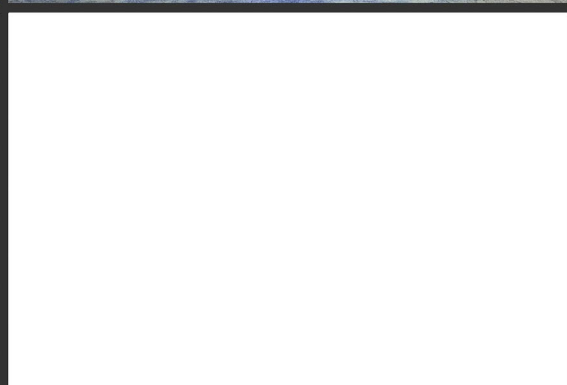
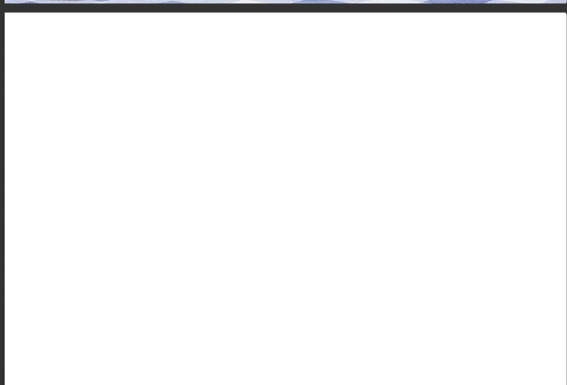
WHITE



3079-HL-5&6

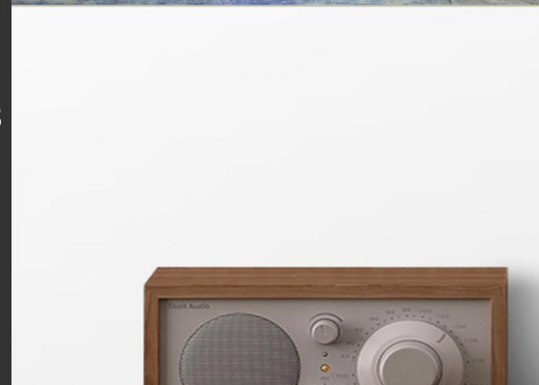
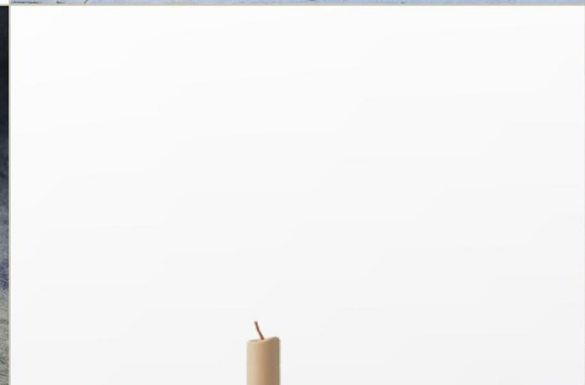
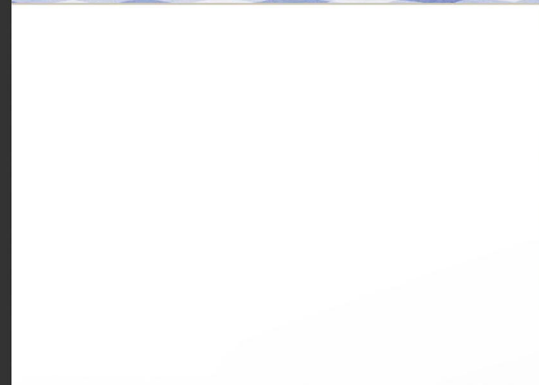
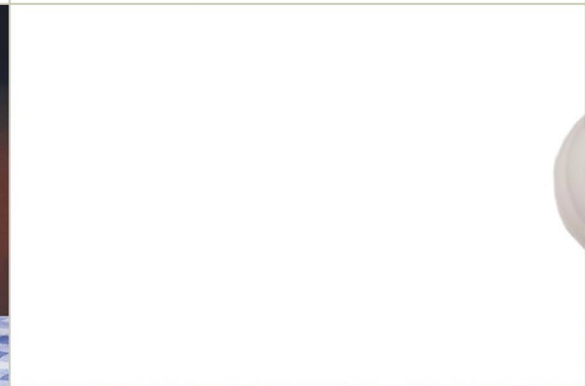


3079-HL-7&8



WHITE

300x450 mm
WALL TILES





WHITE



3079-HL-9&10



3079-HL-11&12



3079-HL-13&14

300x450 mm
WALL TILES





3084-LT



3084-HL-1



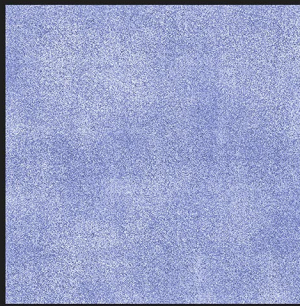
3084-HL-2



3084-HL-3



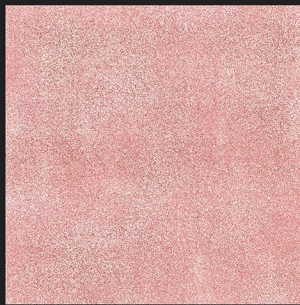
300x450 mm
WALL TILES



SP_1



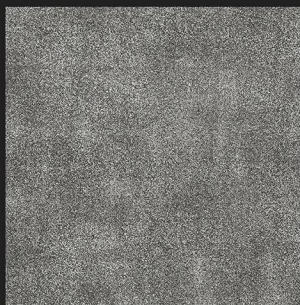
SP_2



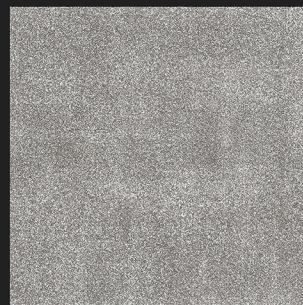
SP_3



SP_4



SP_5



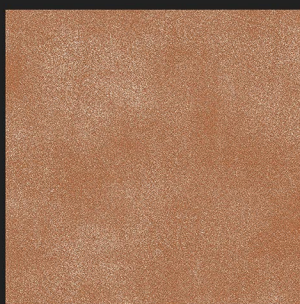
SP_6



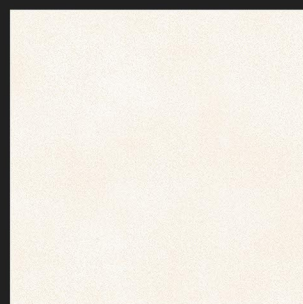
SP_7



SP_8



SP_9



SP_10

TECHNICAL SPECIFICATION

Characteristics	Euro Standards EN-159/IS 13753	EXO Value
DIMENSION & SURFACE QUALITY		
1) Dimension	± 0.5%	± 0.2%
2) Deviation in Thickness	± 0.6mm	± 0.2mm
3) Straightness of sides	± 0.3%	± 0.2%
4) Rectangularity	± 0.5%	± 0.3%
5) Surface Flatness	± 0.5%	± 0.3%
6) Surface Quality	Min 95%	Min 96%
PHYSICAL PROPERTIES		
1) Water Absorption	>10%	14-17%
2) Bending Strength	>150 kg/Cm ²	200 - 250 Kg/Cm ²
3) Scratch hardness(Mohs)	Min 3	Min 3
4) Craziing	1 Cycle	No Craziing at 5 Cycle
CHEMICAL PROPERTIES		
1) Staining Resistance	Min Class 2	Resistance to all Acids And Alkalies & Household Chemical, except Hydro Flouric Acid
2) Household Chemical	Min Class B	
THERMALAL PROPERTIES		
1) Thermal Shock	Resistant to 10 Cycle	CONFORMS
2) Thermal Expansion	Max-9E-06	CONFORMS

PACKING DETAILS

Size	Thickness (Approx.)	Tiles Per Box	Coverage Area Per Box	Wt. of Box (Approx.)
600x300 mm	9 mm	5 pcs.	0.9 sq.m.	14.0 kgs.
450x300 mm	8 mm	6 pcs.	0.81 sq.m.	12.0 kgs.
300x300 mm	8 mm	9 pcs.	0.81 sq.m.	11.0 kgs.

APPLICATION



OUR SURFACE



Glossy



Matt



Super White



Reactive



Luster

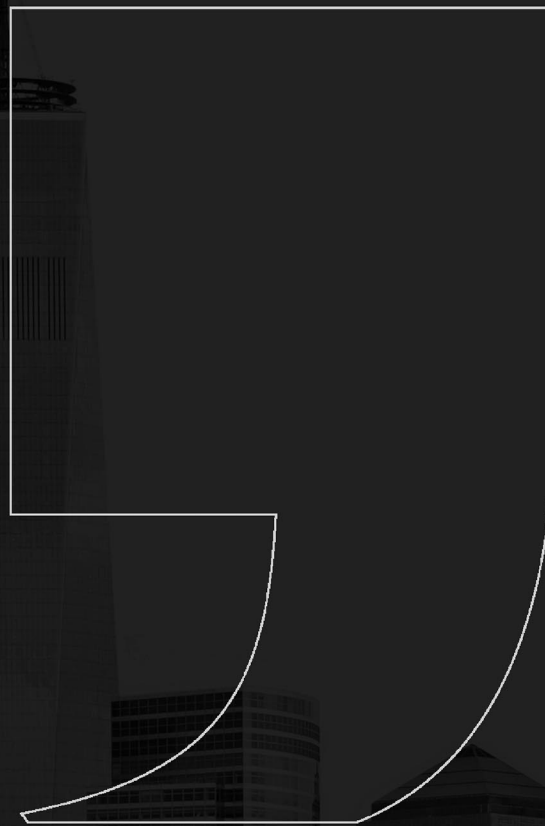


Glue



Sugar

exotile



EXOTILE LLP

Survey No. 1291, Nr. Aniyari Chowkdi, NH-7, Halvad - Maliya Road, Tal.: Maliya - 363 630, Dist.: Morbi - Gujarat, INDIA.

+91 91183 12345 | info@exotile.in | www.exotile.in

FOLLOW US

