



# exotile

300x450 MM



**KITCHEN** || **300x450 MM**  
**DIGITAL WALL TILES**



exotile

DEFINING NEW

# *Creativity*

FOR FOREVER SPACE.

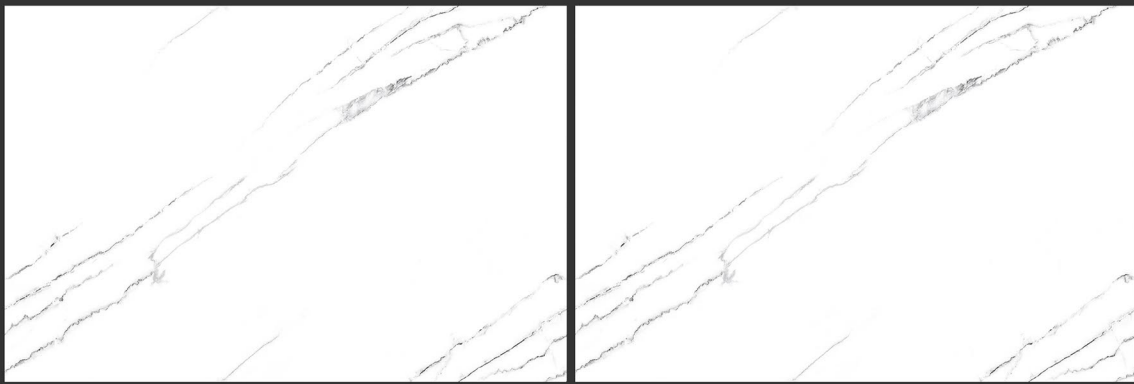
When creativity seems to beckon, how can you indulge in idle pleasures? come closer to the world of digital wall tiles. we design to synchronise the functioning and vibrancy of your home, pepping up your walls to be visually welcoming.



# Surface

## OF TRUE FEELINGS

our diverse range of tiles are so lucid and encompassing that you could never stop loving your wall. their lovingly smooth textures and tender soothing colours, transform your home into a cocoon of comfort. live more happily surrounded by beautiful, luxurious satiny tiles.



1360-LT



1360-HL-3&4



1360-HL-5&6



1360-LT



300x450 mm  
WALL TILES

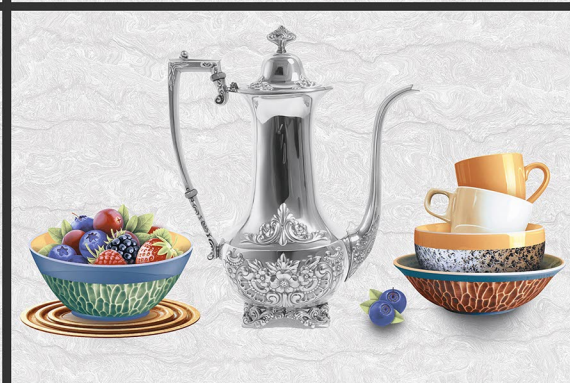
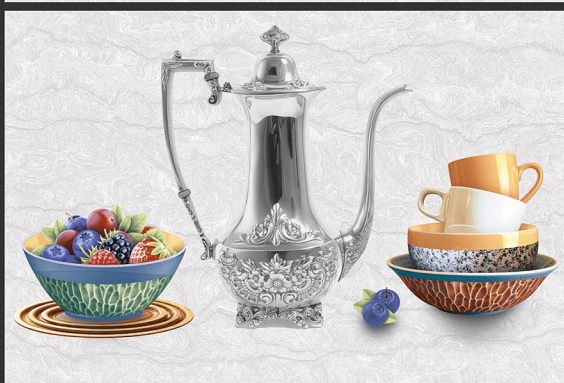




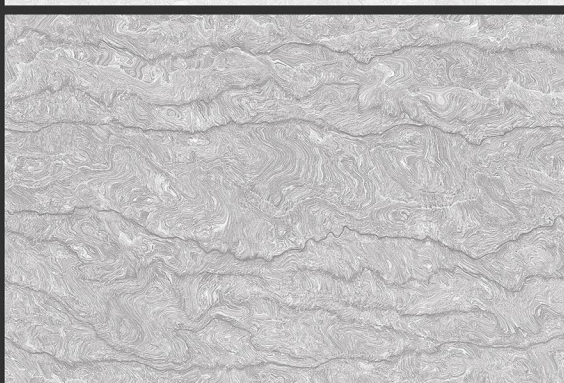
1416-LT



1416-HL-2



1416-HL-3



1416-DK



300x450 mm  
**WALL TILES**

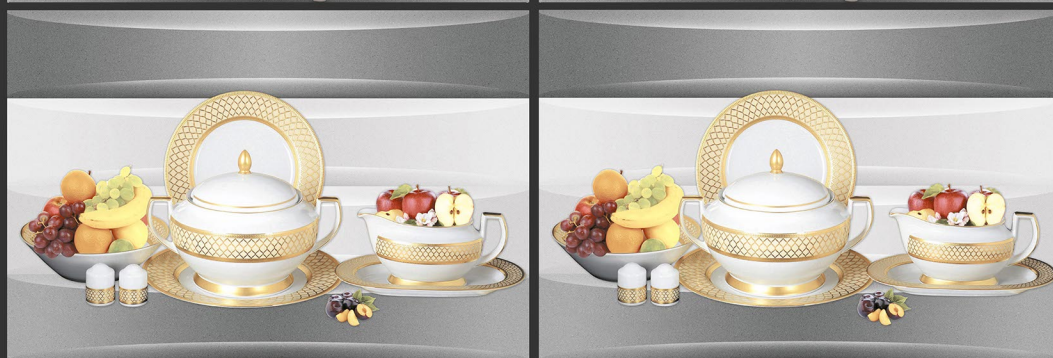




3086-LT



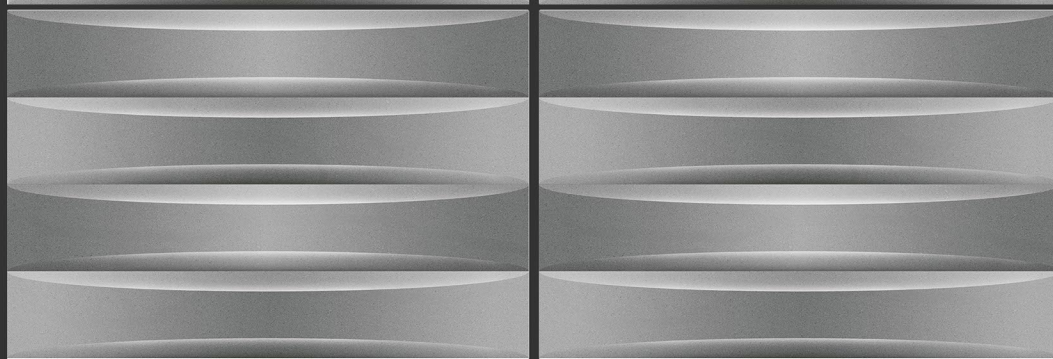
3086-HL-1



3086-HL-2



3086-HL-3

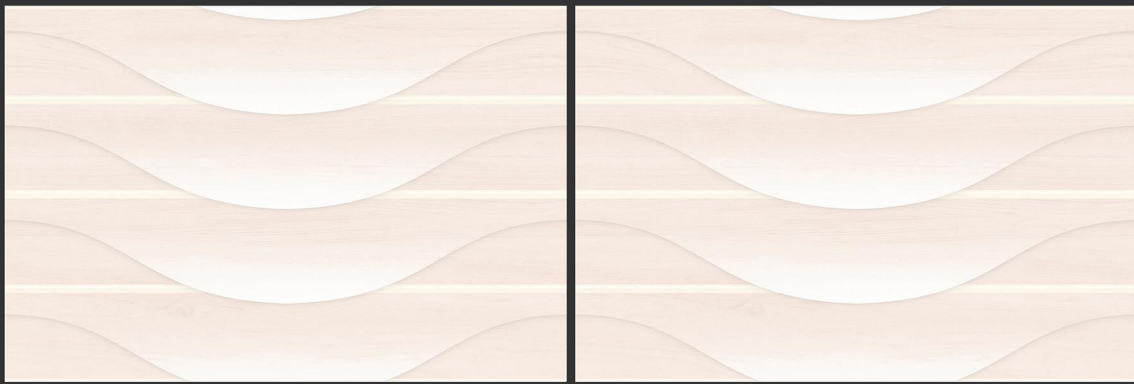


3086-DK

300x450 mm  
WALL TILES







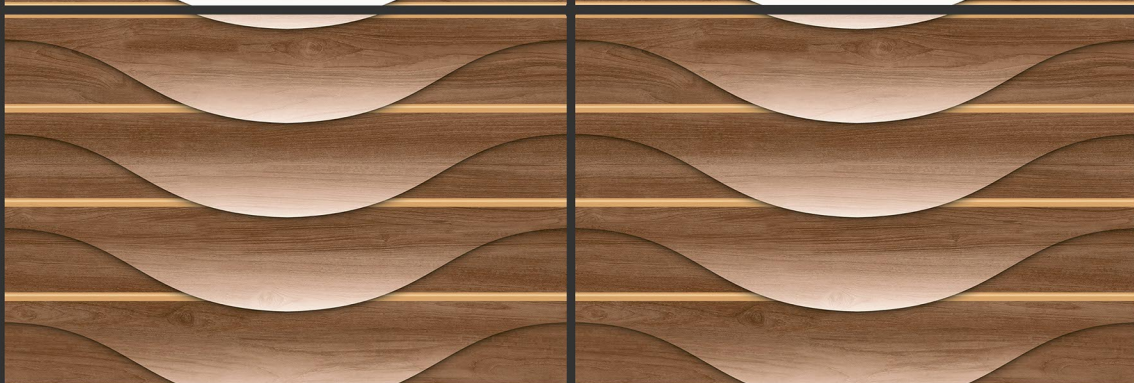
3087-LT



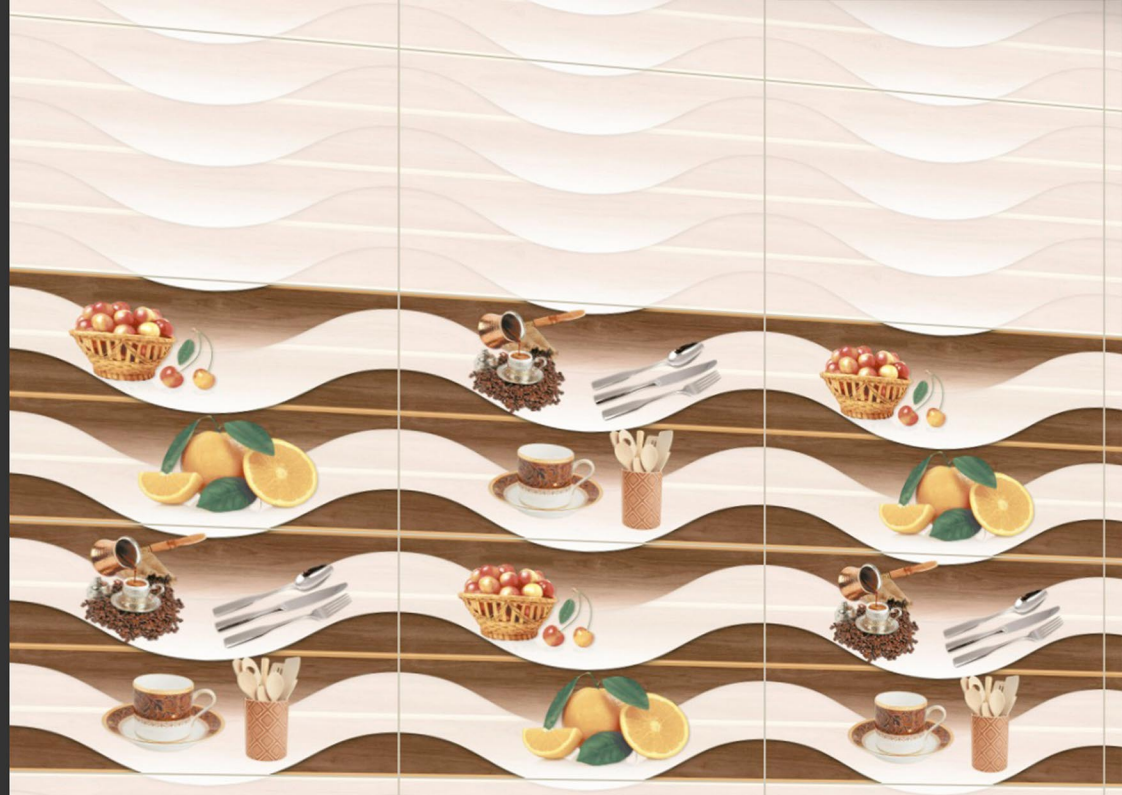
3087-HL-1



3087-HL-2

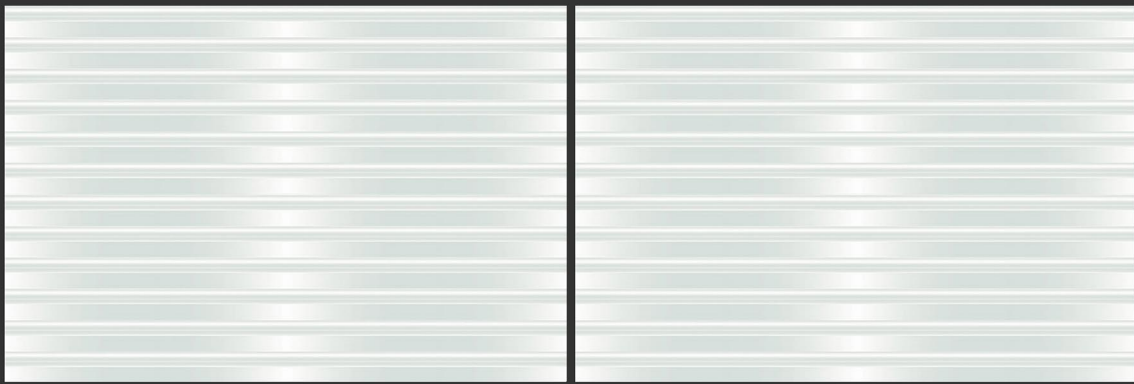


3087-DK



300x450 mm  
**WALL TILES**





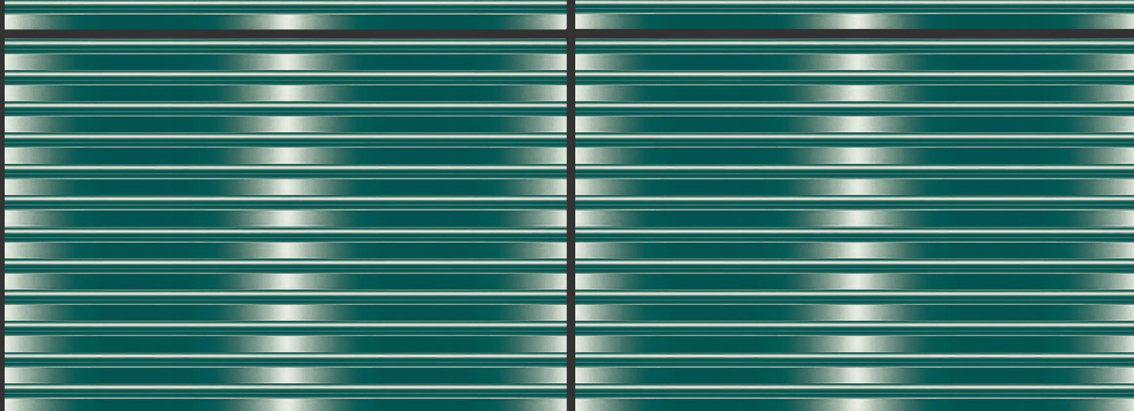
3088-LT



3088-HL-1&2



3088-HL-3

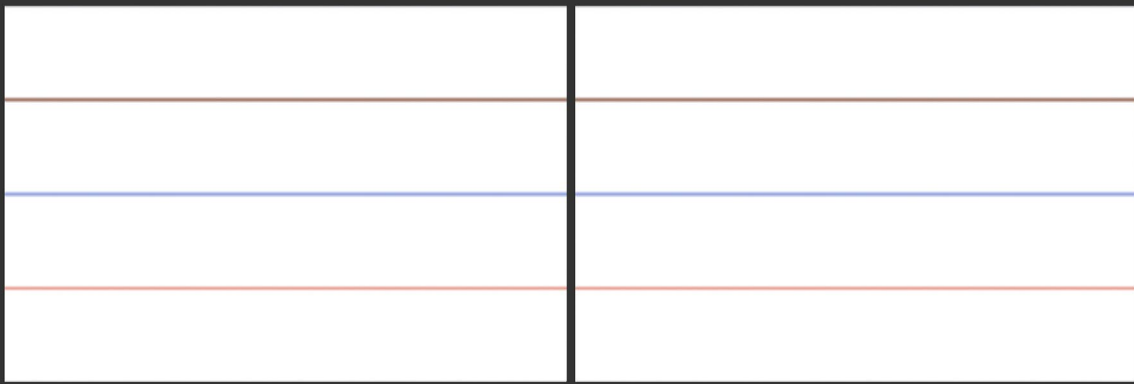


3088-DK



300x450 mm  
WALL TILES

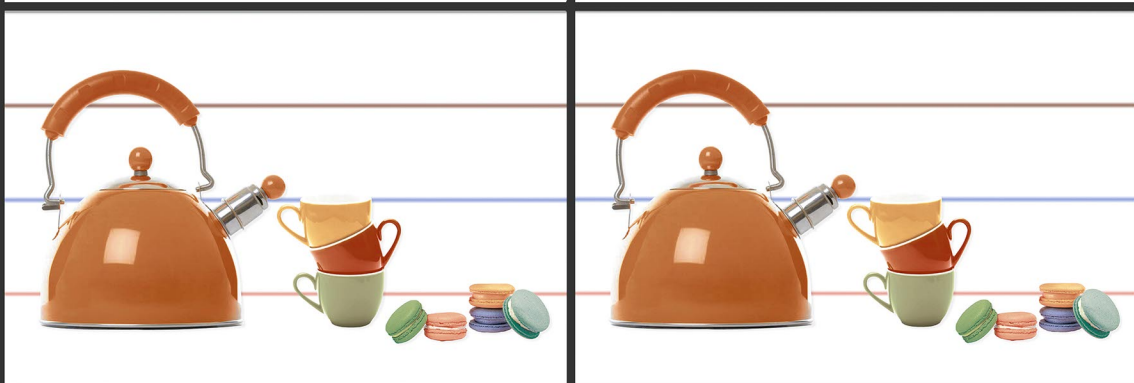




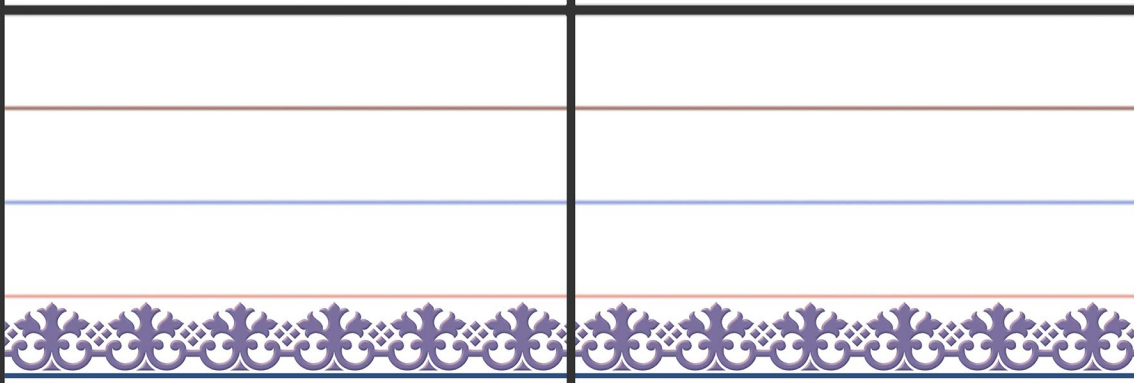
3091-LT



3091-HL-1



3091-HL-2

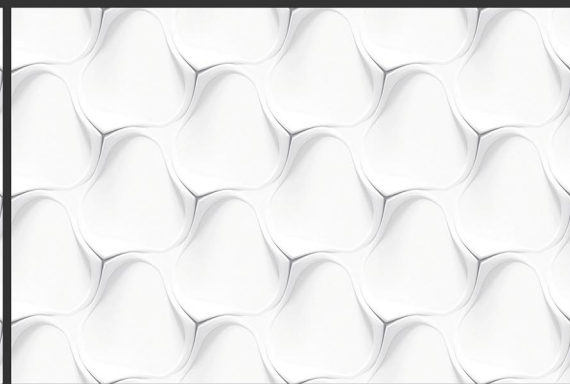
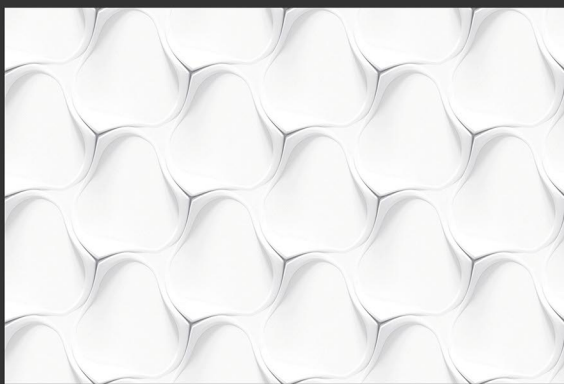


3091-HL-3

300x450 mm  
WALL TILES







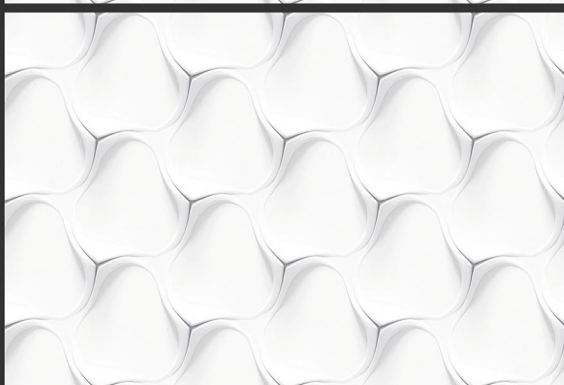
3092-LT



3092-HL-1&2



3092-HL-3&4



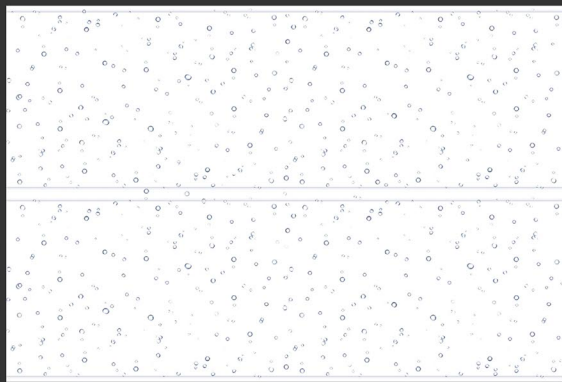
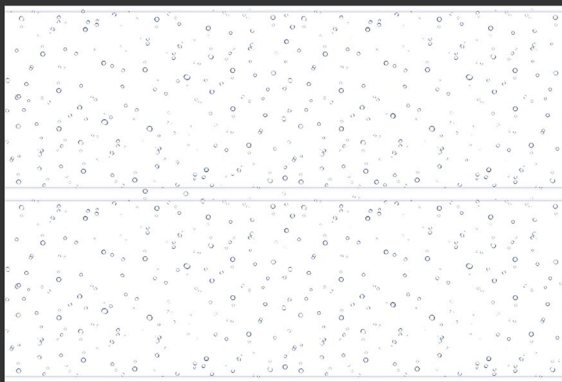
3092-LT



300x450 mm  
**WALL TILES**



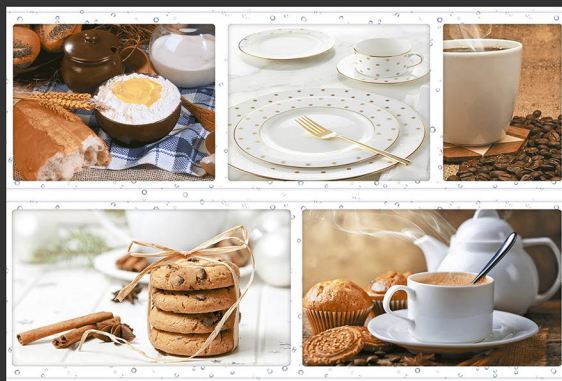
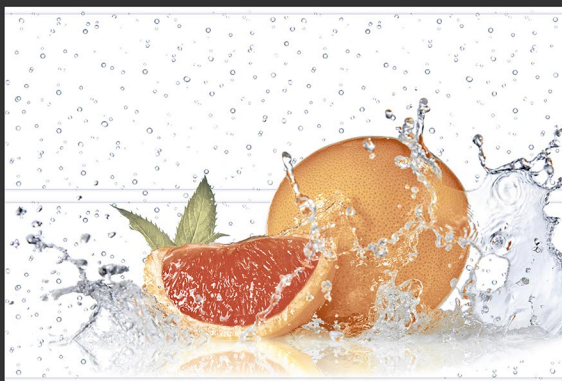
exotile



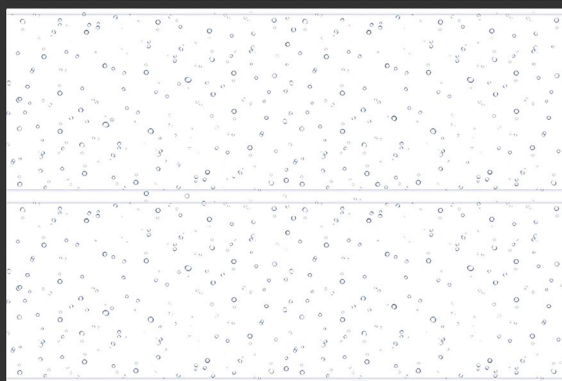
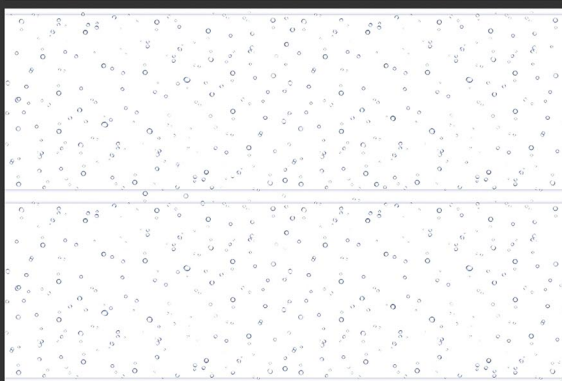
3093-LT



3093-HL-1&2



3093-HL-3&4

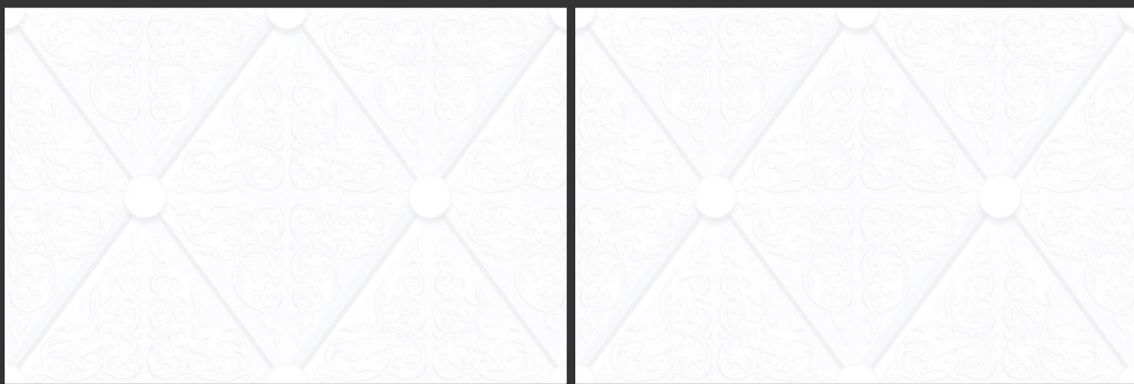


3093-LT

300x450 mm  
WALL TILES







3097-LT



3097-HL-1



3097-HL-2

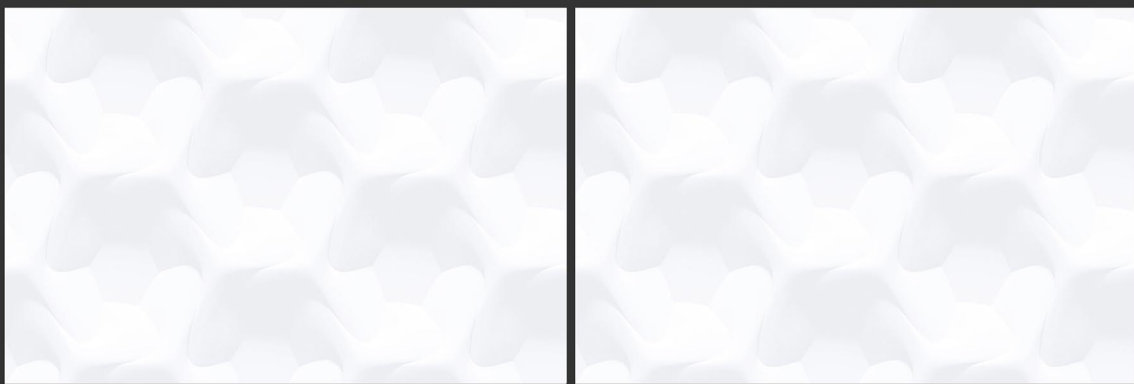


3097-DK



300x450 mm  
WALL TILES





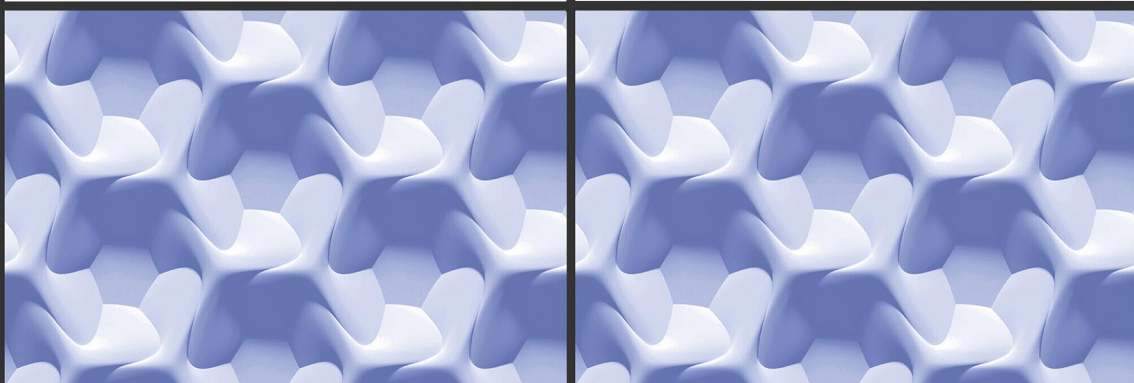
3098-LT



3098-HL-3



3098-HL-4

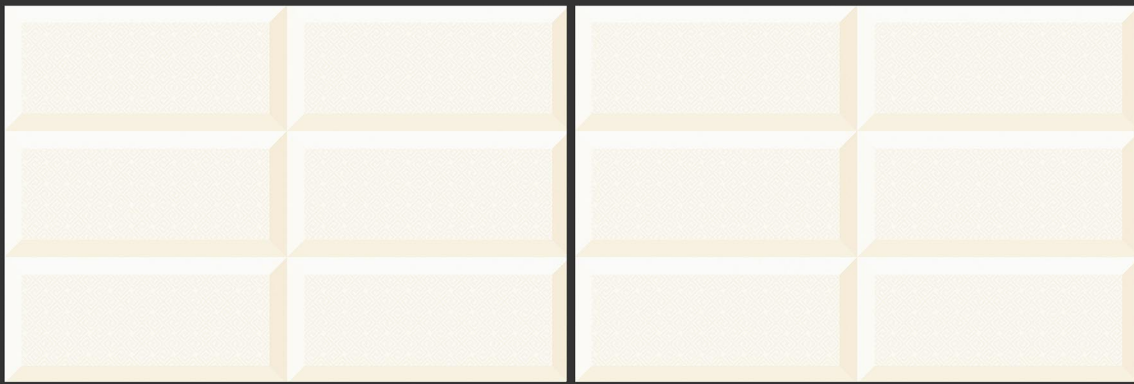


3098-DK

300x450 mm  
**WALL TILES**







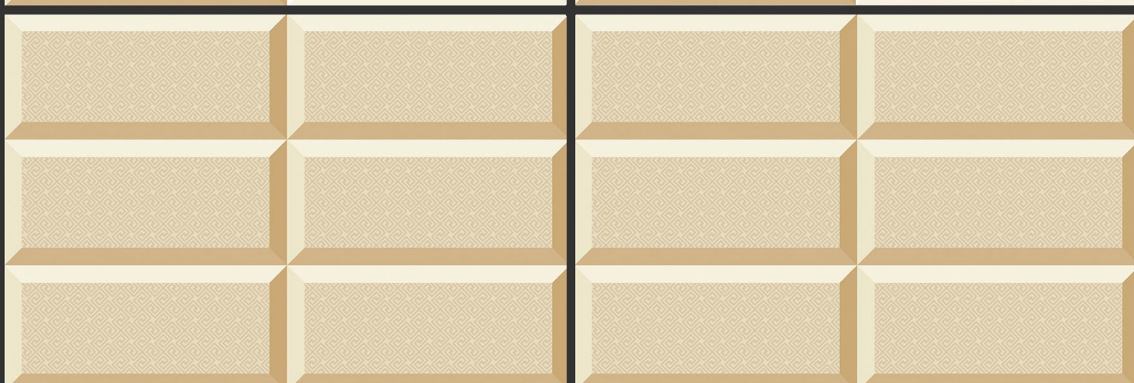
3100-LT



3100-HL-1&2



3100-HL-3&4

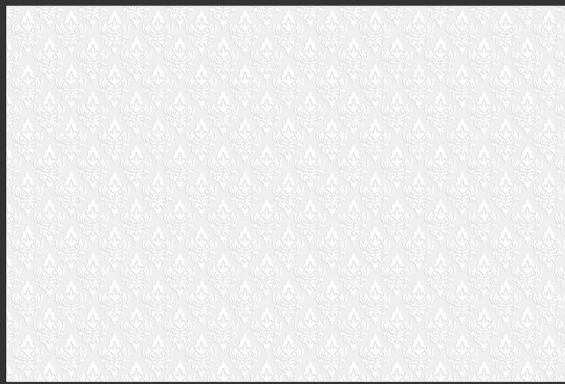
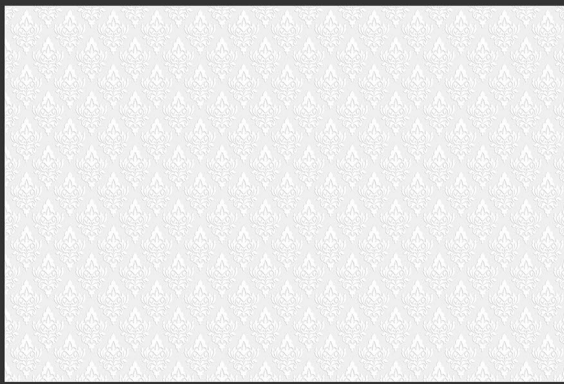


3100-DK



300x450 mm  
WALL TILES





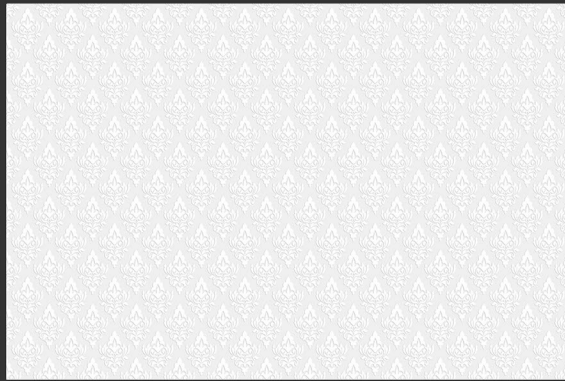
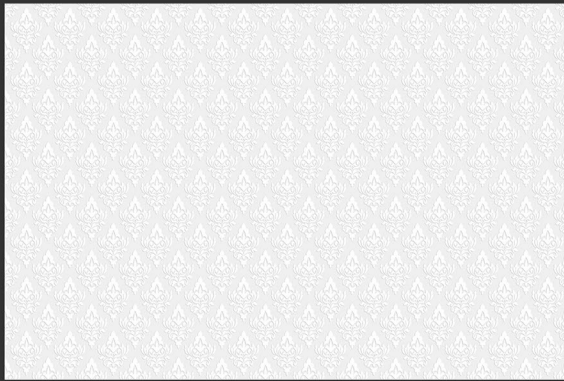
3101-LT



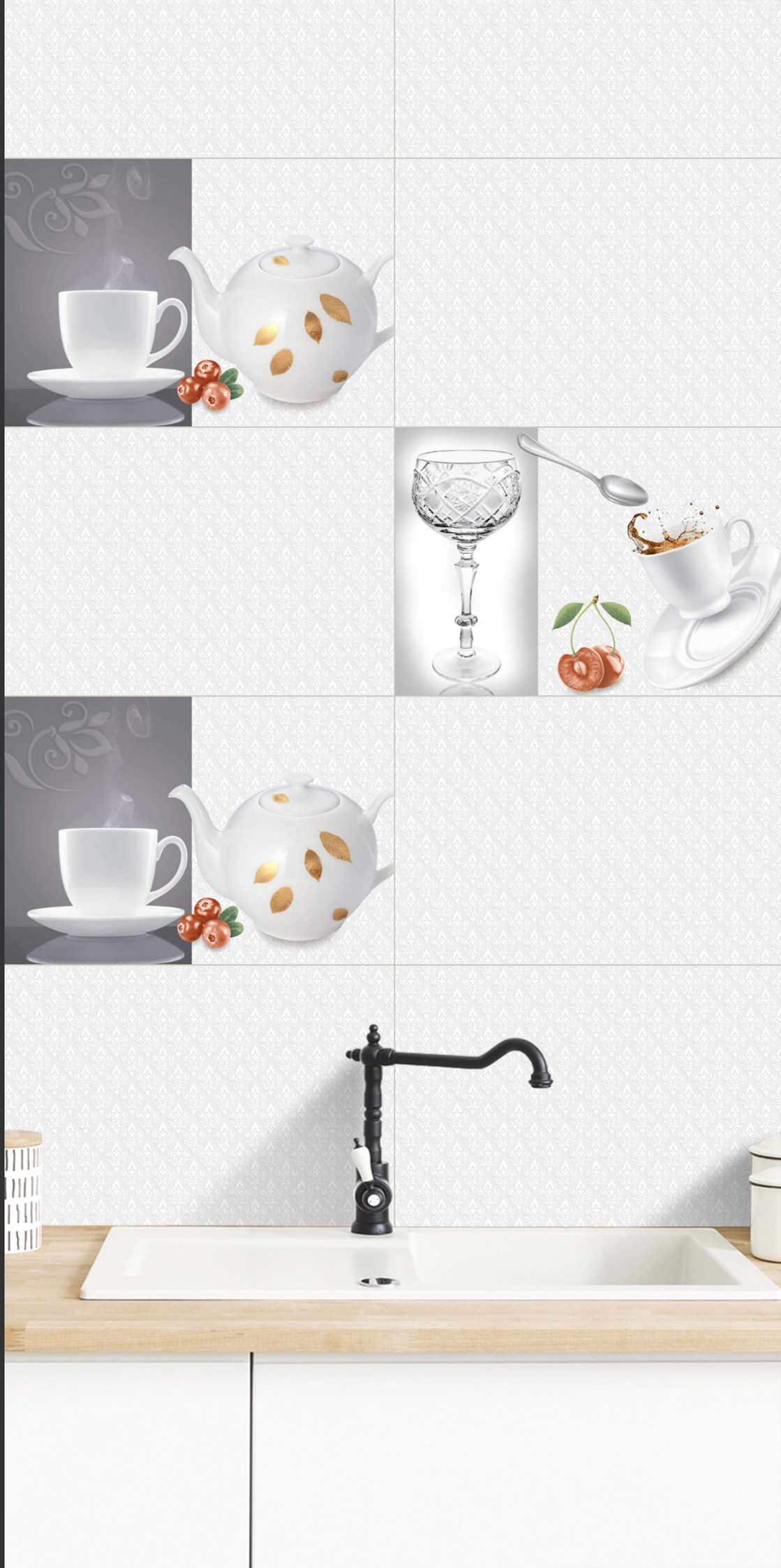
3101-HL-1



3101-HL-2

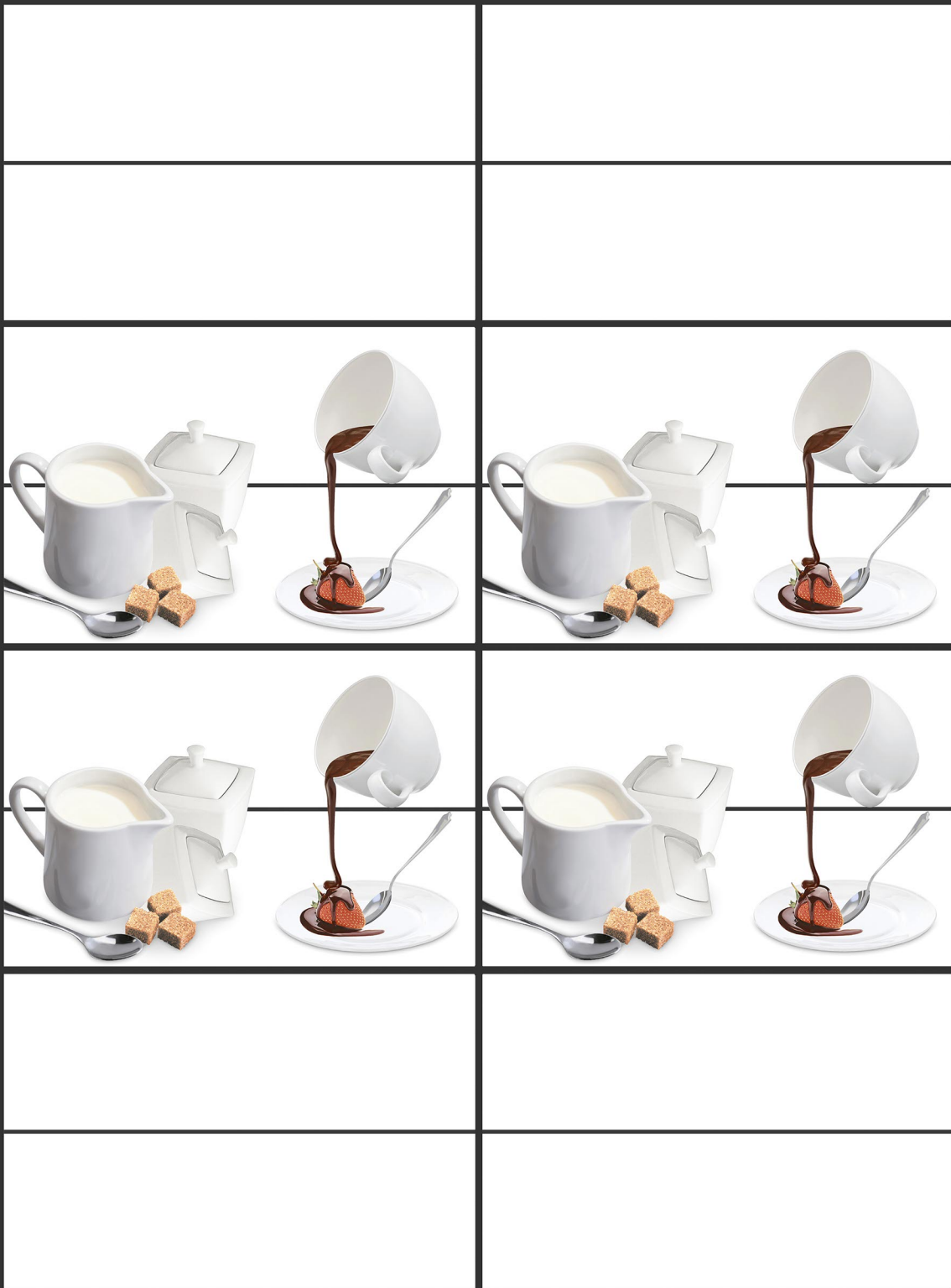


3101-LT



300x450 mm  
**WALL TILES**





3103-LT

3103-HL-1

3103-HL-1

3103-LT

300x450 mm  
WALL TILES







3106-LT



3106-HL-1



3106-HL-2

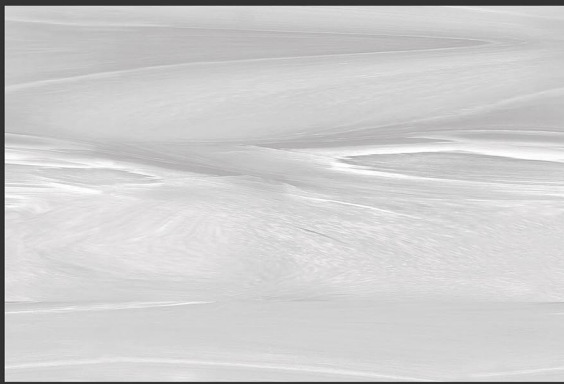


3106-LT

300x450 mm  
**WALL TILES**







3110-LT



3110-HL-1



3110-HL-2

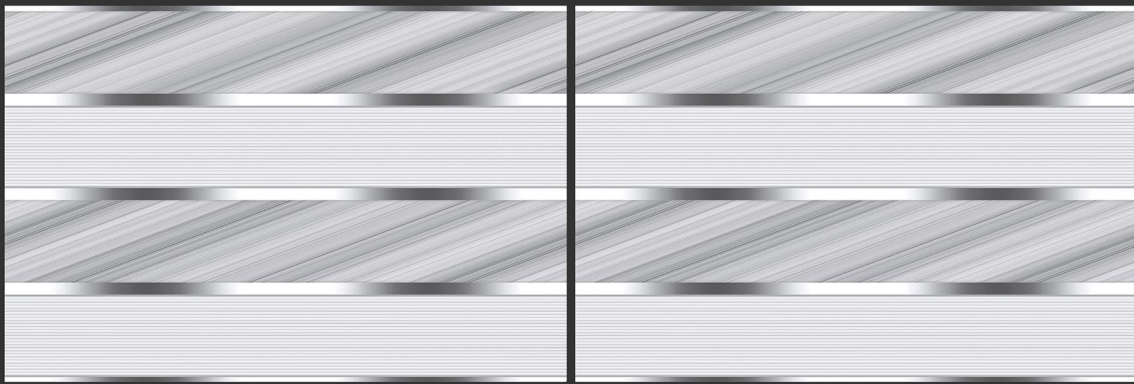


3110-LT

300x450 mm  
**WALL TILES**







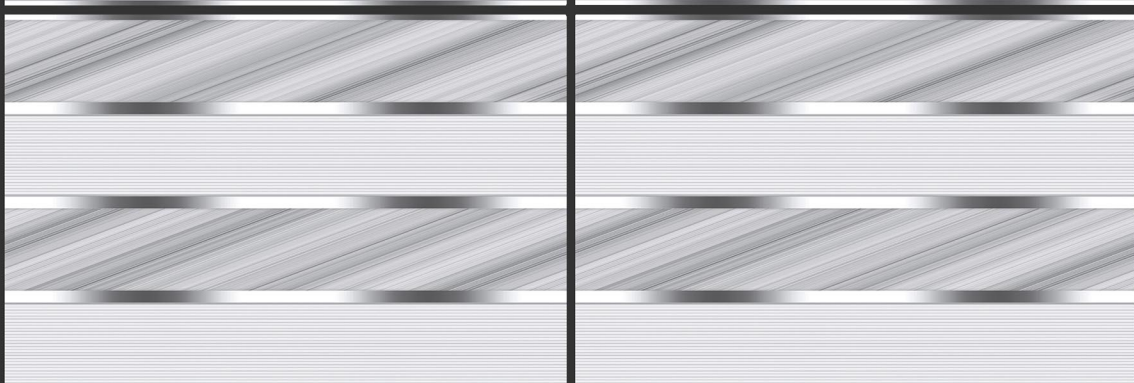
3111-LT



3111-HL-1



3111-HL-2



3111-LT

300x450 mm  
WALL TILES







3116-LT

3116-HL-1&2

3116-HL-3&4

3116-DK

300x450 mm  
**WALL TILES**







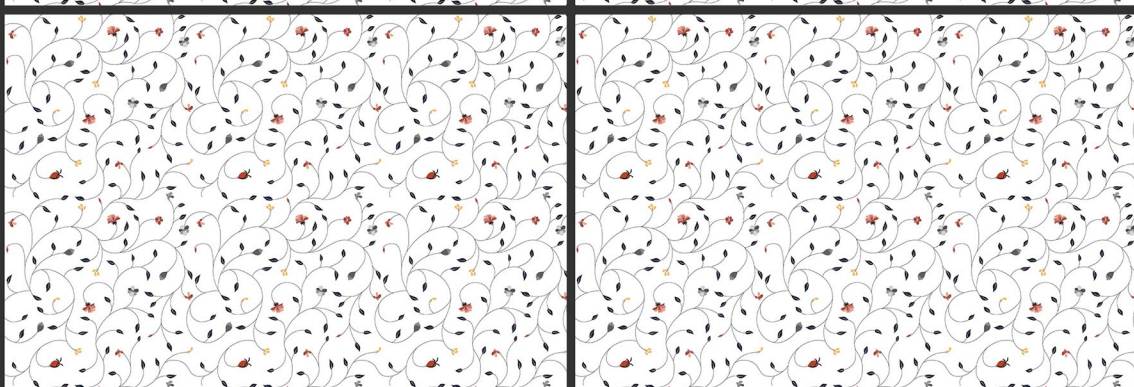
3117-LT



3117-HL-1



3117-HL-2



3117-LT



300x450 mm  
WALL TILES





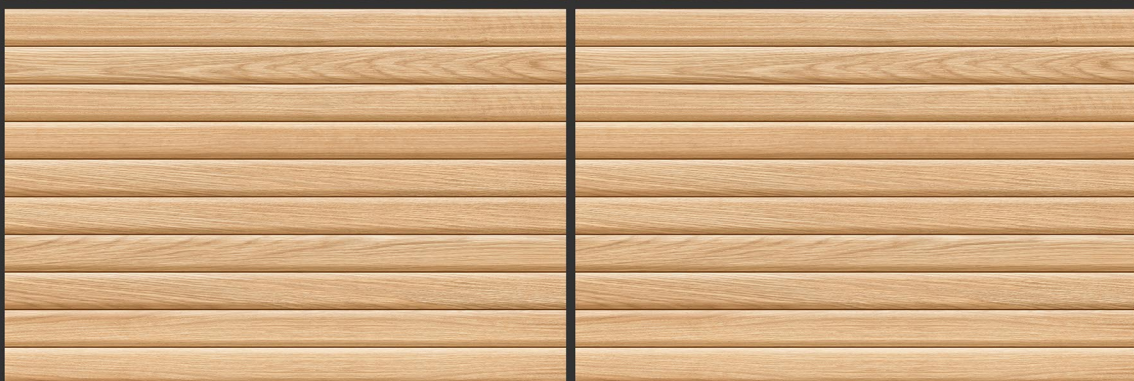
3118-LT



3118-HL-1



3118-HL-2

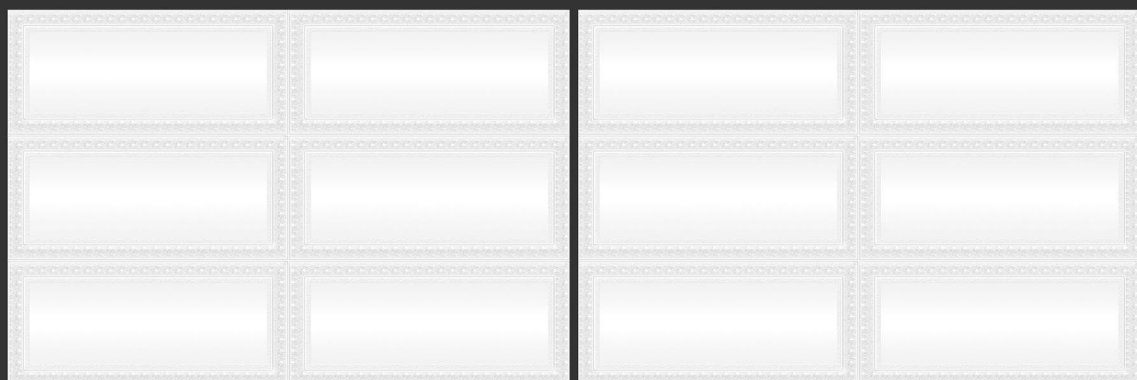


3118-DK



300x450 mm  
**WALL TILES**





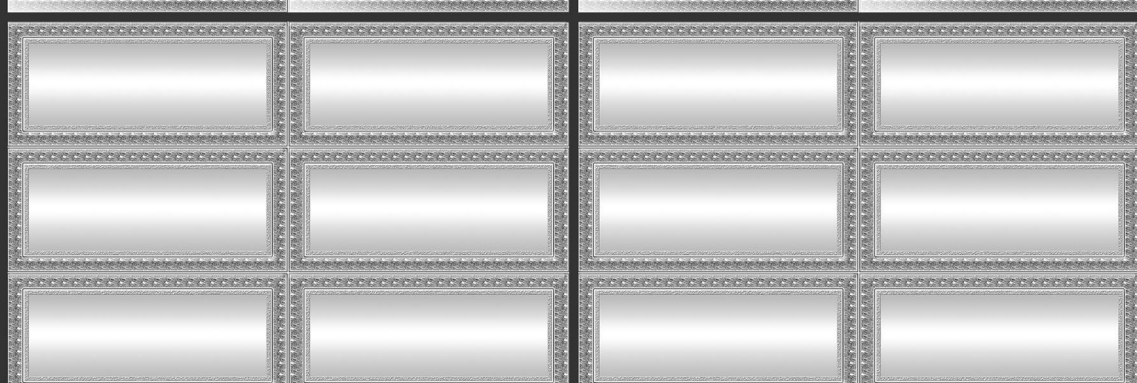
3119-LT



3119-HL-1



3119-HL-2

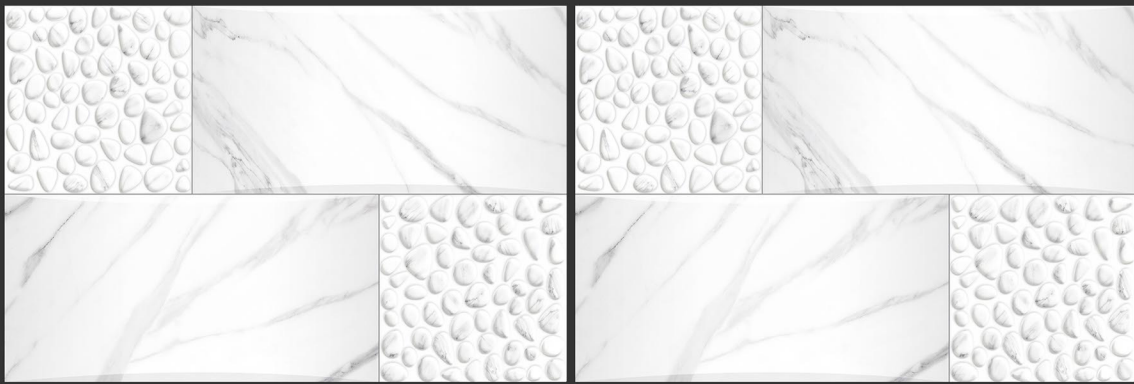


3119-DK

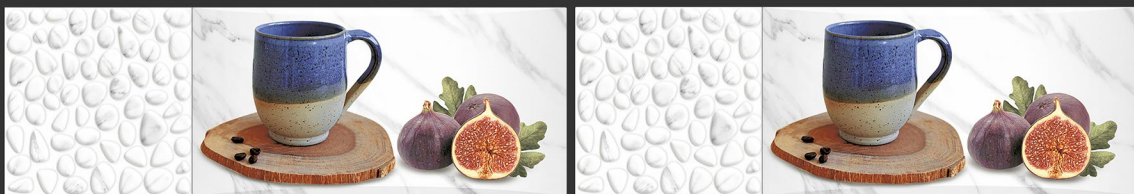


300x450 mm  
**WALL TILES**

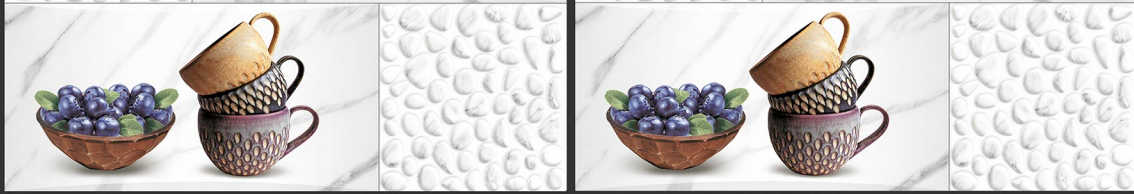




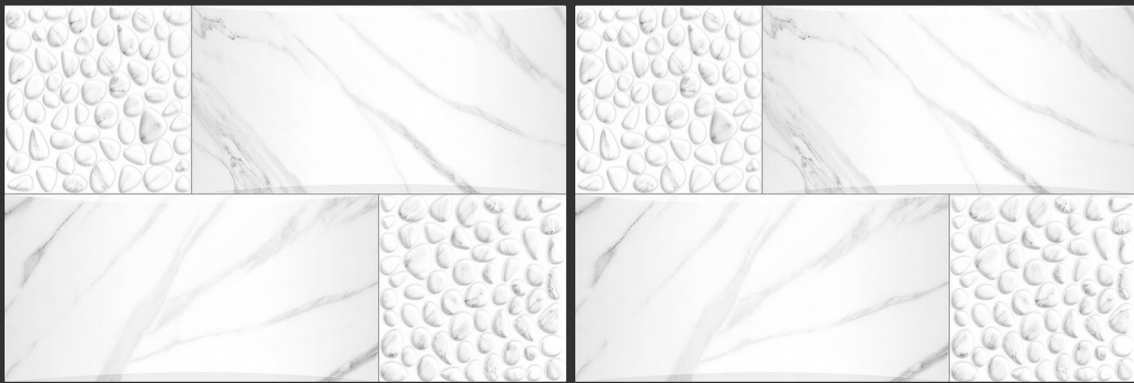
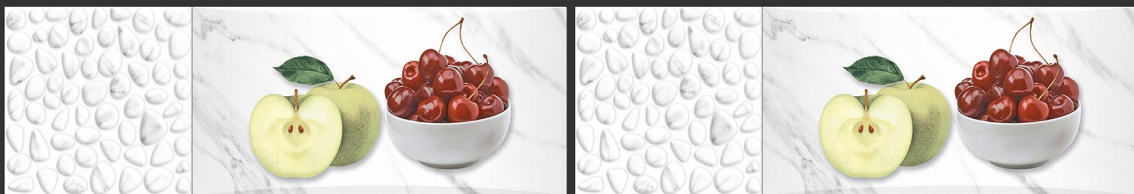
3120-LT



3120-HL-1



3120-HL-2



3120-LT



300x450 mm  
WALL TILES





3121-LT



3121-HL-1



3121-HL-2



3121-LT

300x450 mm  
**WALL TILES**







3122-LT



3122-HL-1



3122-HL-2



3122-LT





exotile



3123-LT



3123-HL-1



3123-HL-2

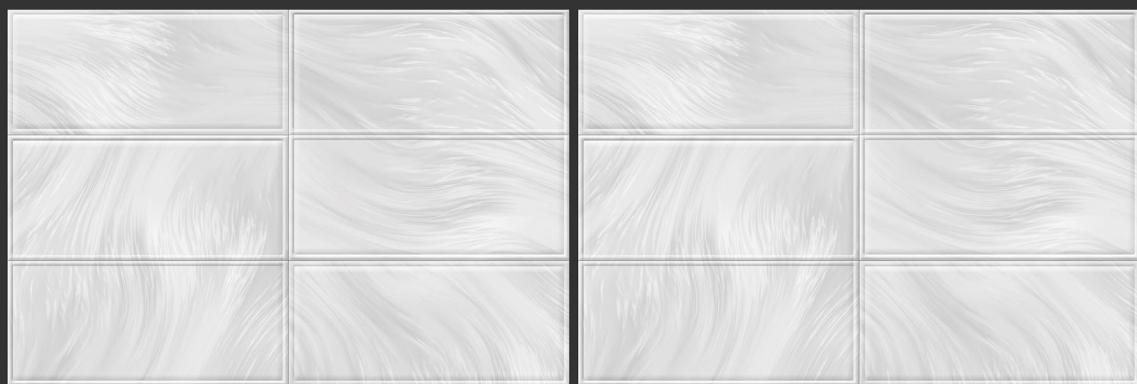


3123-LT



300x450 mm  
WALL TILES





3124-LT



3124-HL-1



3124-HL-2

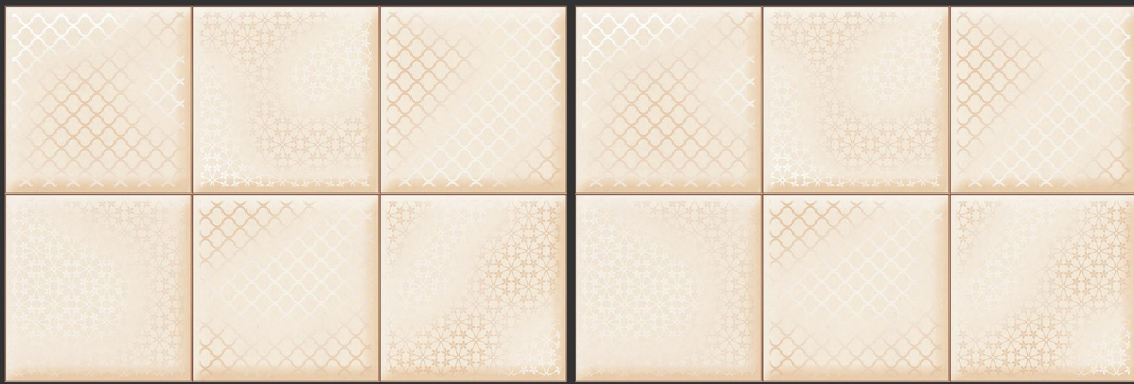


3124-LT



300x450 mm  
**WALL TILES**





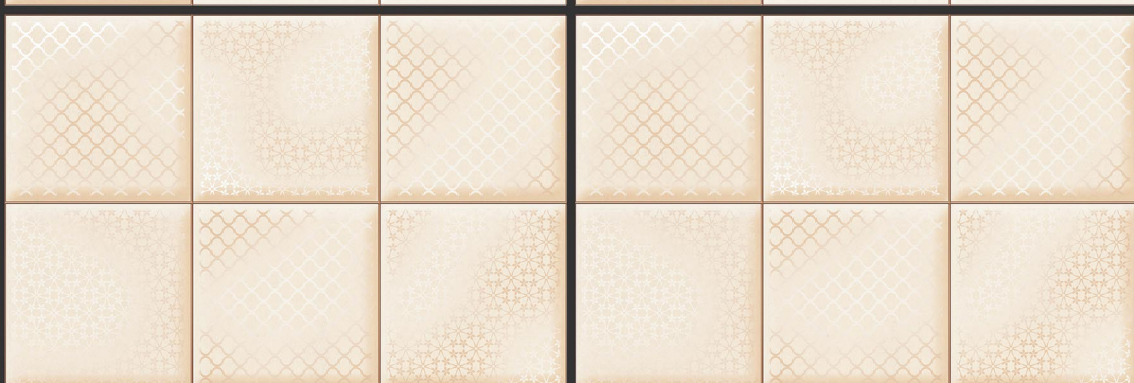
3125-LT



3125-HL-1



3125-HL-2



3125-LT



300x450 mm  
WALL TILES





3126-LT

3126-HL-1

3126-HL-2

3126-LT

300x450 mm

**WALL TILES**







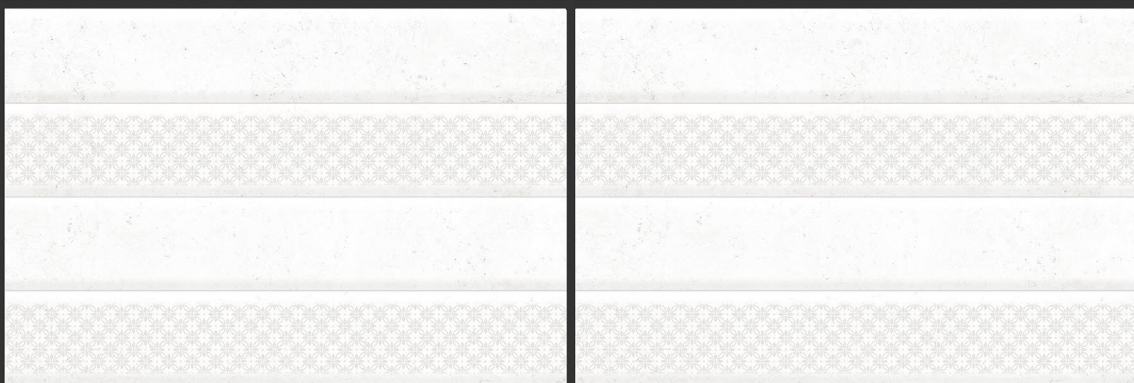
3127-LT



3127-HL-1



3127-HL-2

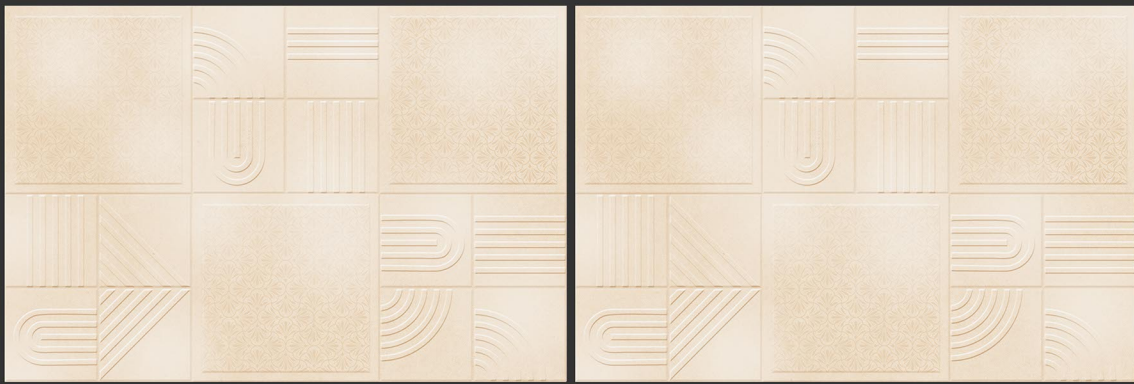


3127-LT

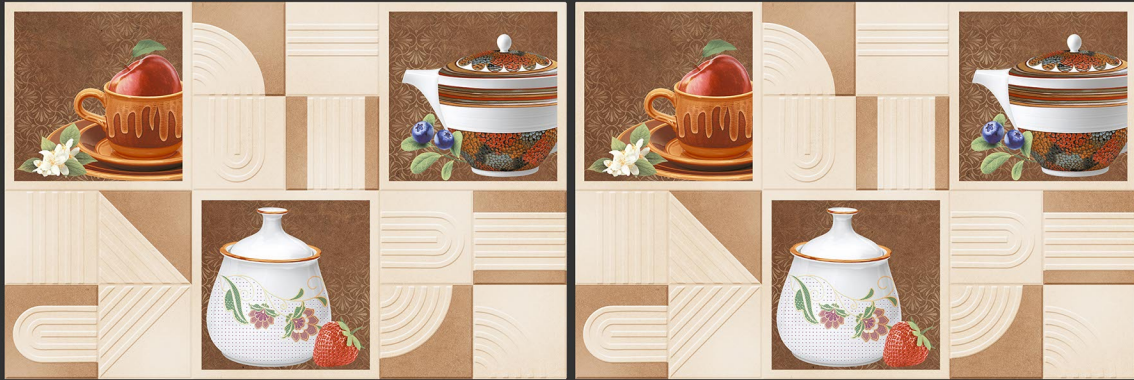
300x450 mm  
**WALL TILES**







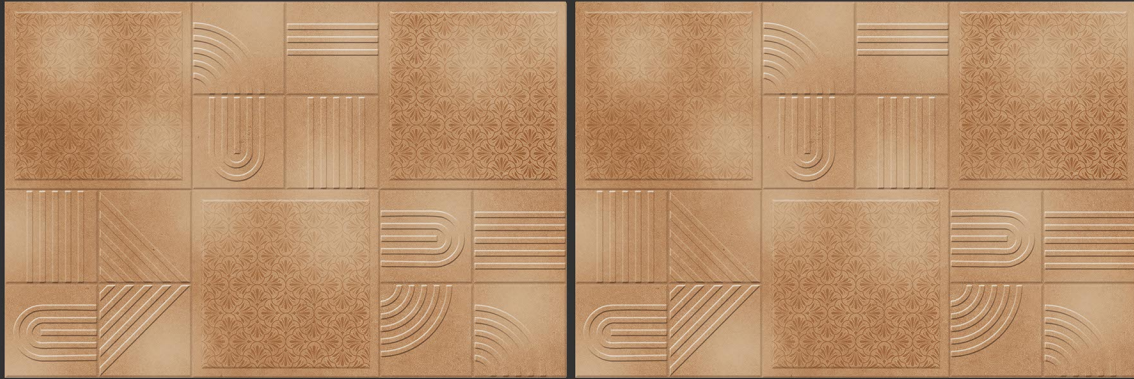
3128-LT



3128-HL-1



3128-HL-2



3128-DK



300x450 mm  
WALL TILES





3129-LT

3129-HL-1

3129-HL-2

3129-LT

300x450 mm  
**WALL TILES**



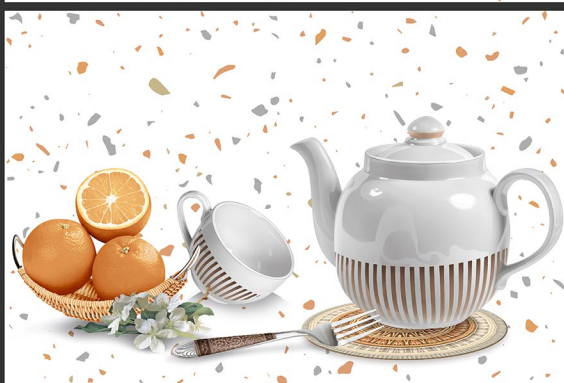




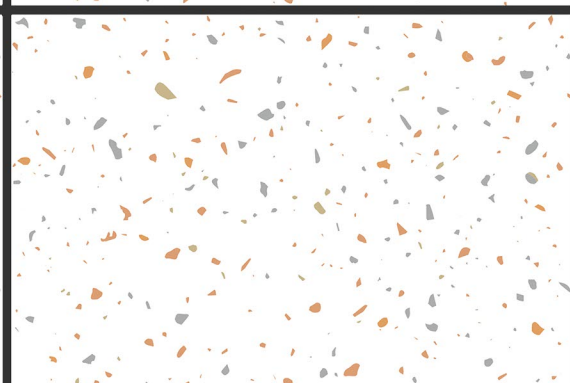
3130-LT



3130-HL-1



3130-HL-2



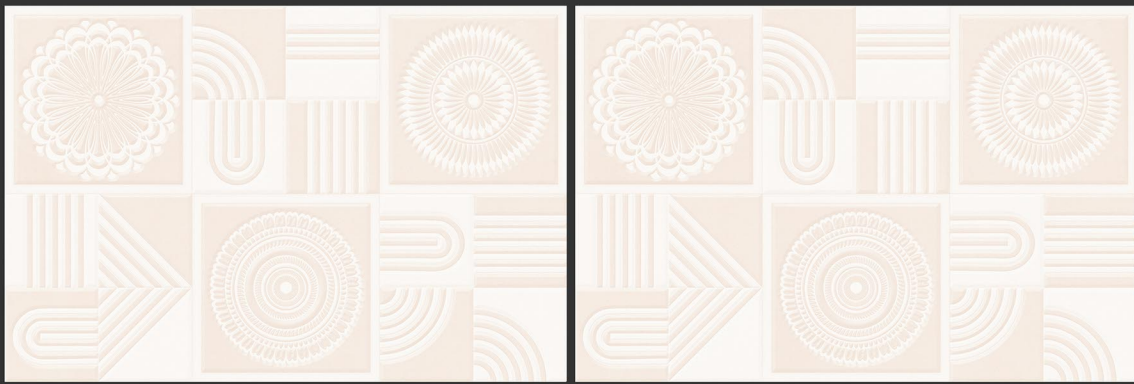
3130-LT



300x450 mm  
**WALL TILES**



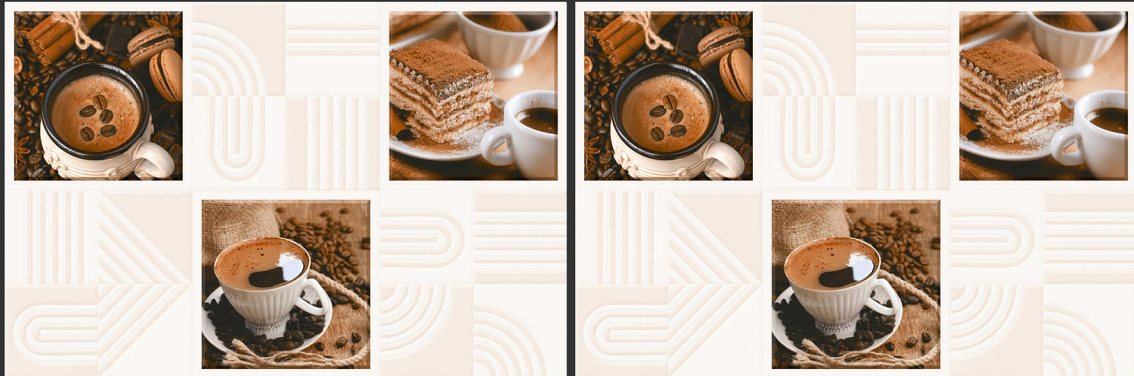




3131-LT



3131-HL-1



3131-HL-2

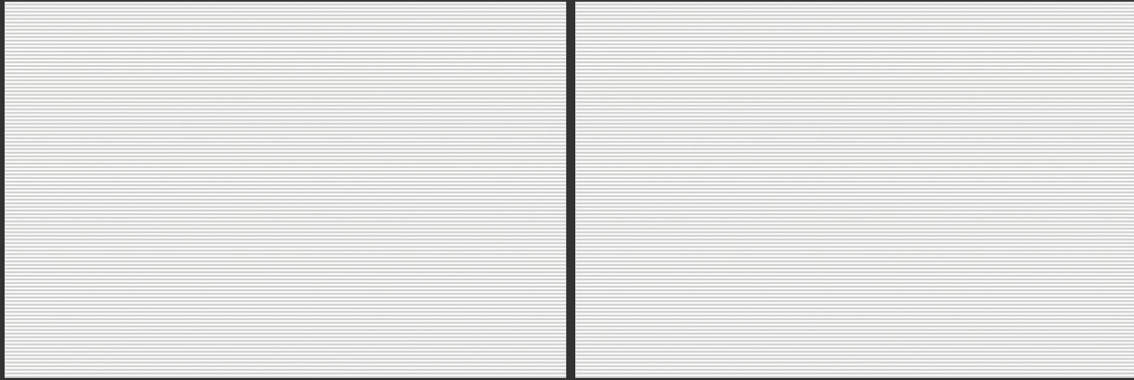


3131-DK

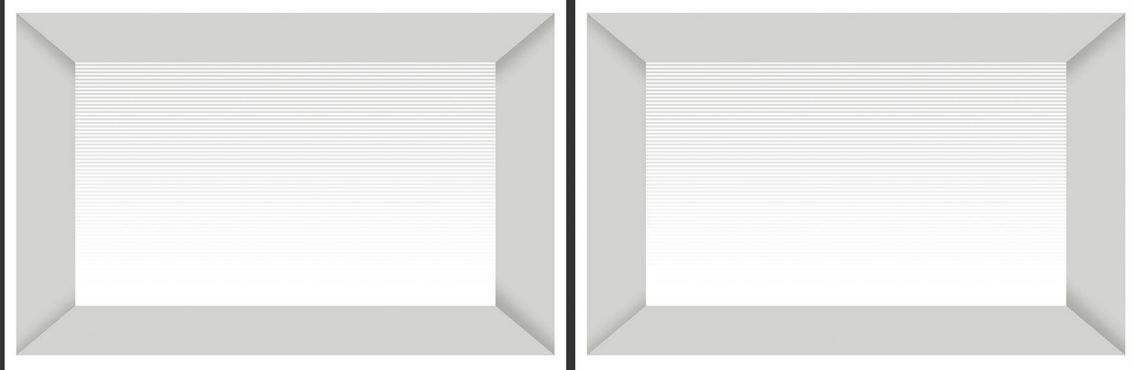
300x450 mm  
WALL TILES







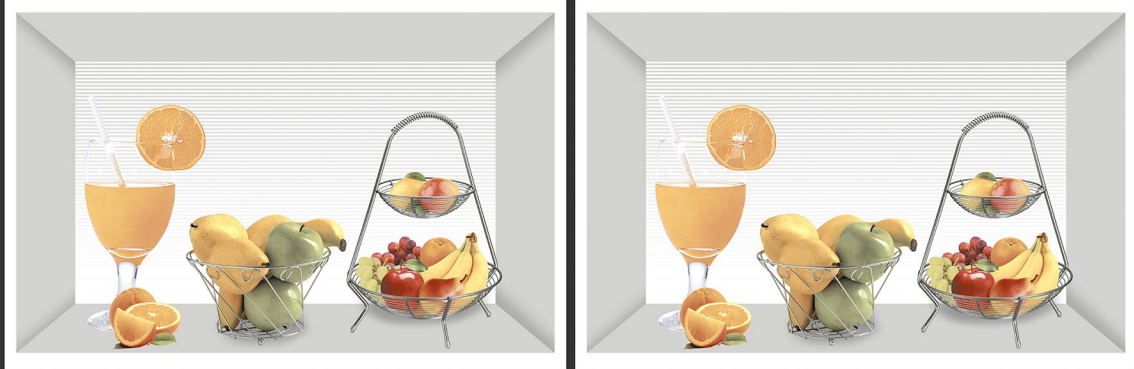
3132-LT



3132-HL-1



3132-HL-2

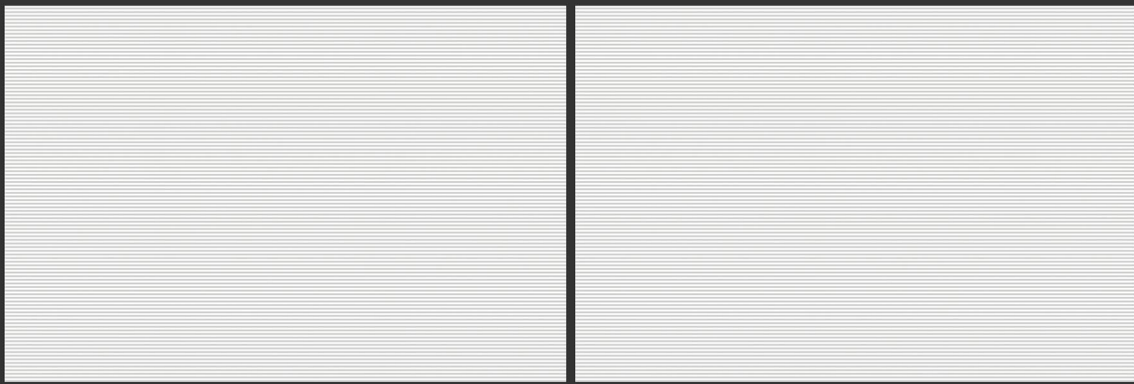


3132-HL-3



300x450 mm  
**WALL TILES**





3132-LT



3132-HL-4



3132-HL-5

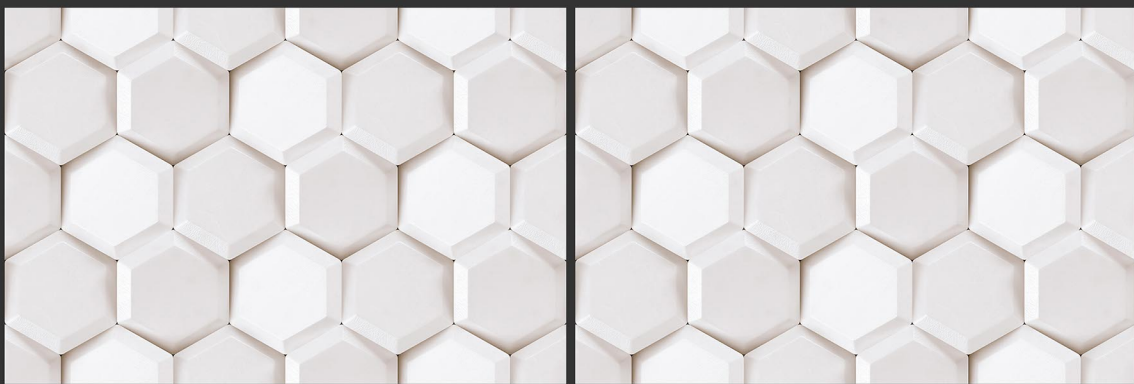


3132-LT



300x450 mm  
WALL TILES





3133-LT



3133-HL-1



3133-HL-2



3133-LT



300x450 mm  
WALL TILES





3133-LT



3133-HL-3



3133-HL-4

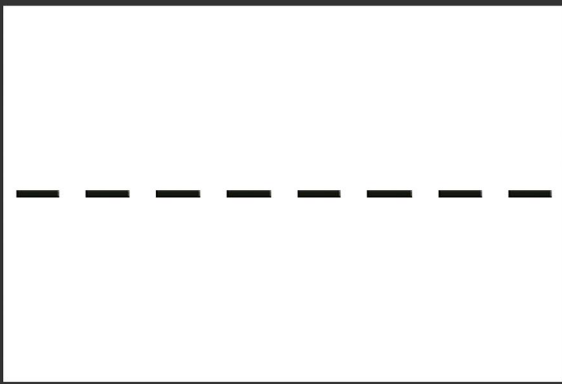
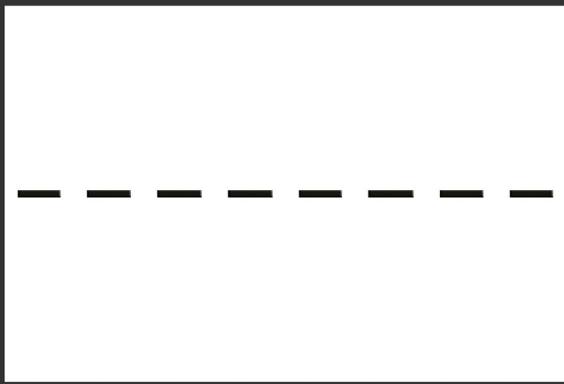


3133-LT



300x450 mm  
WALL TILES

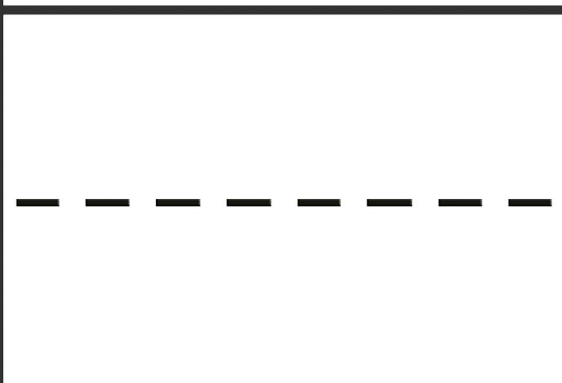
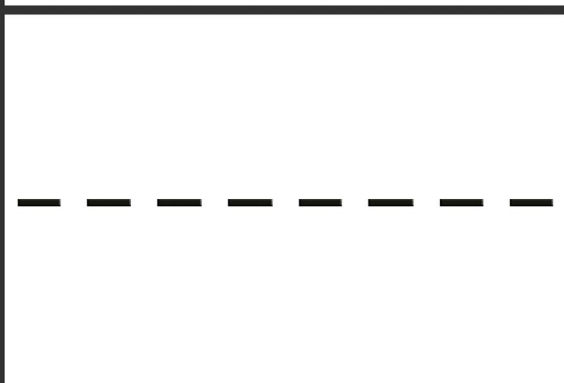




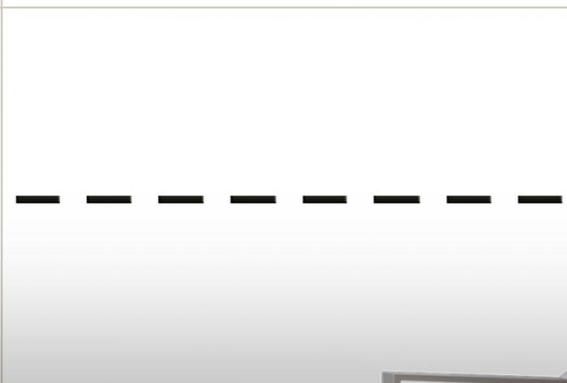
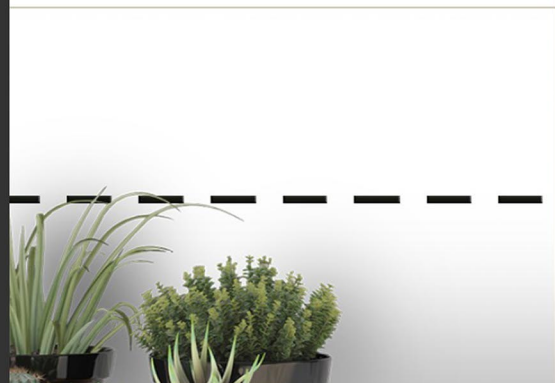
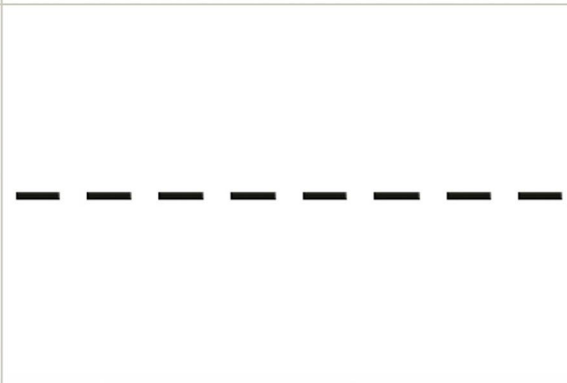
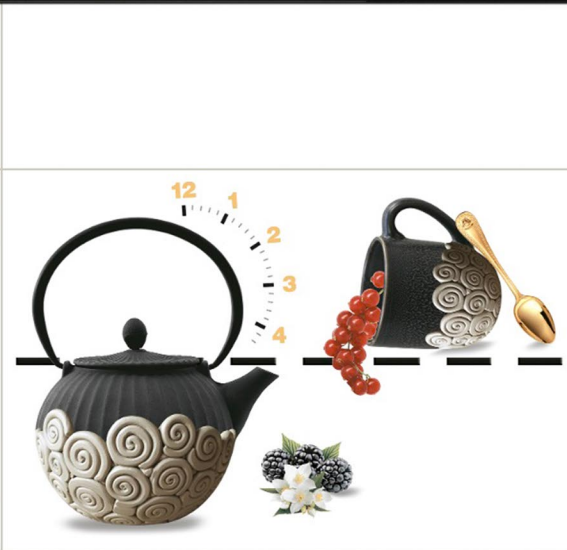
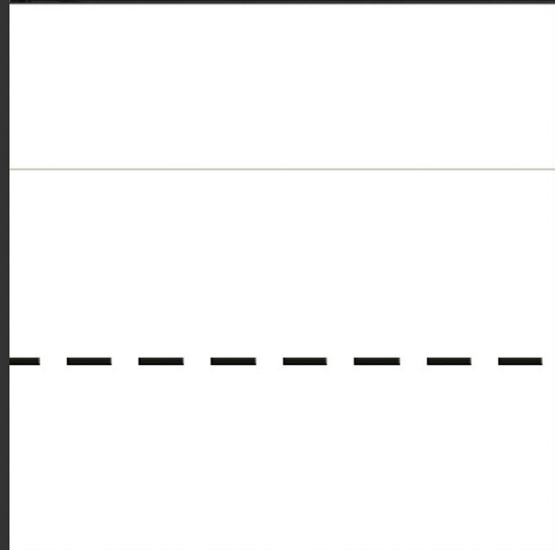
3134-LT



3134-HL-2

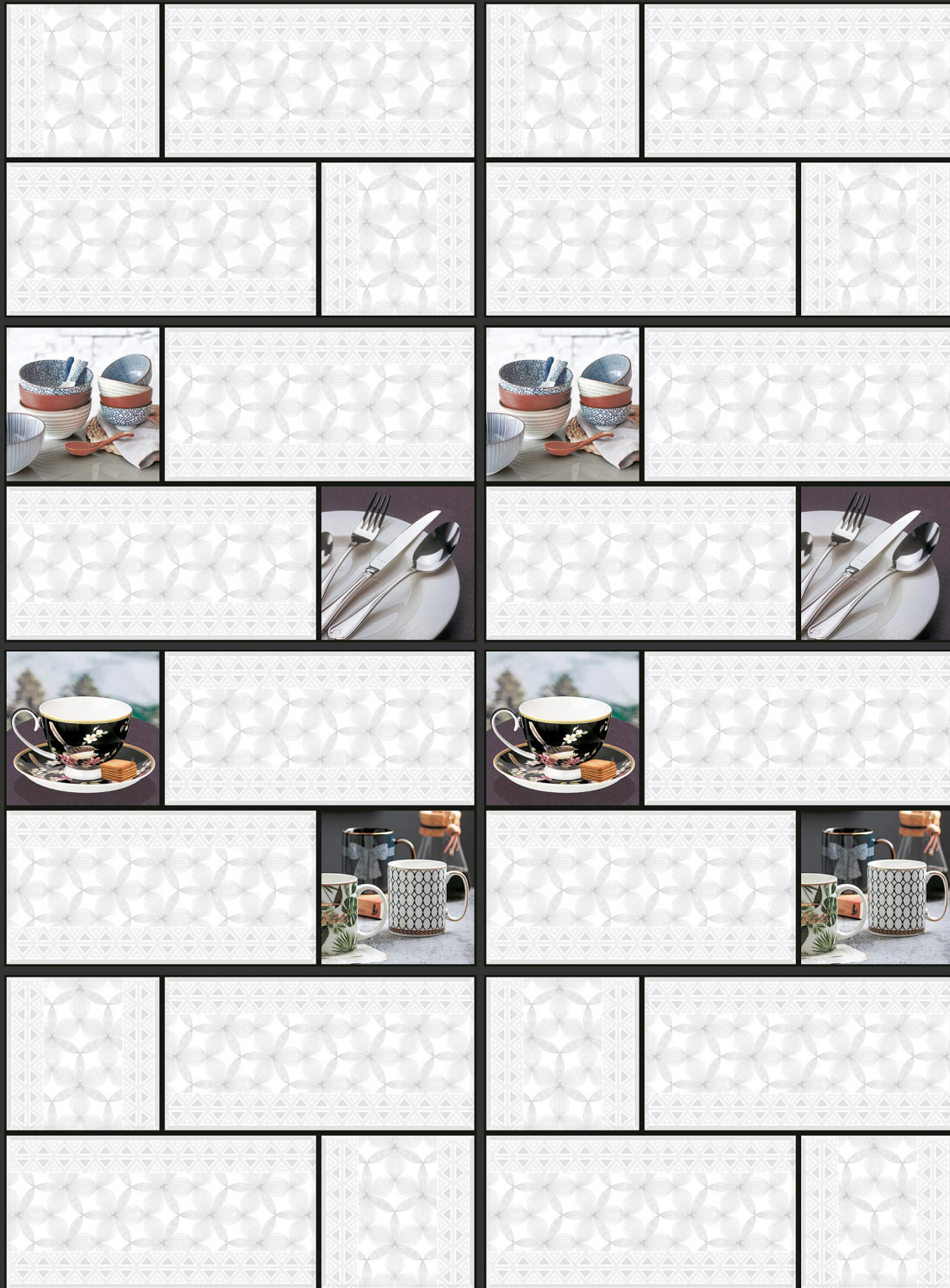


3134-LT



300x450 mm  
WALL TILES





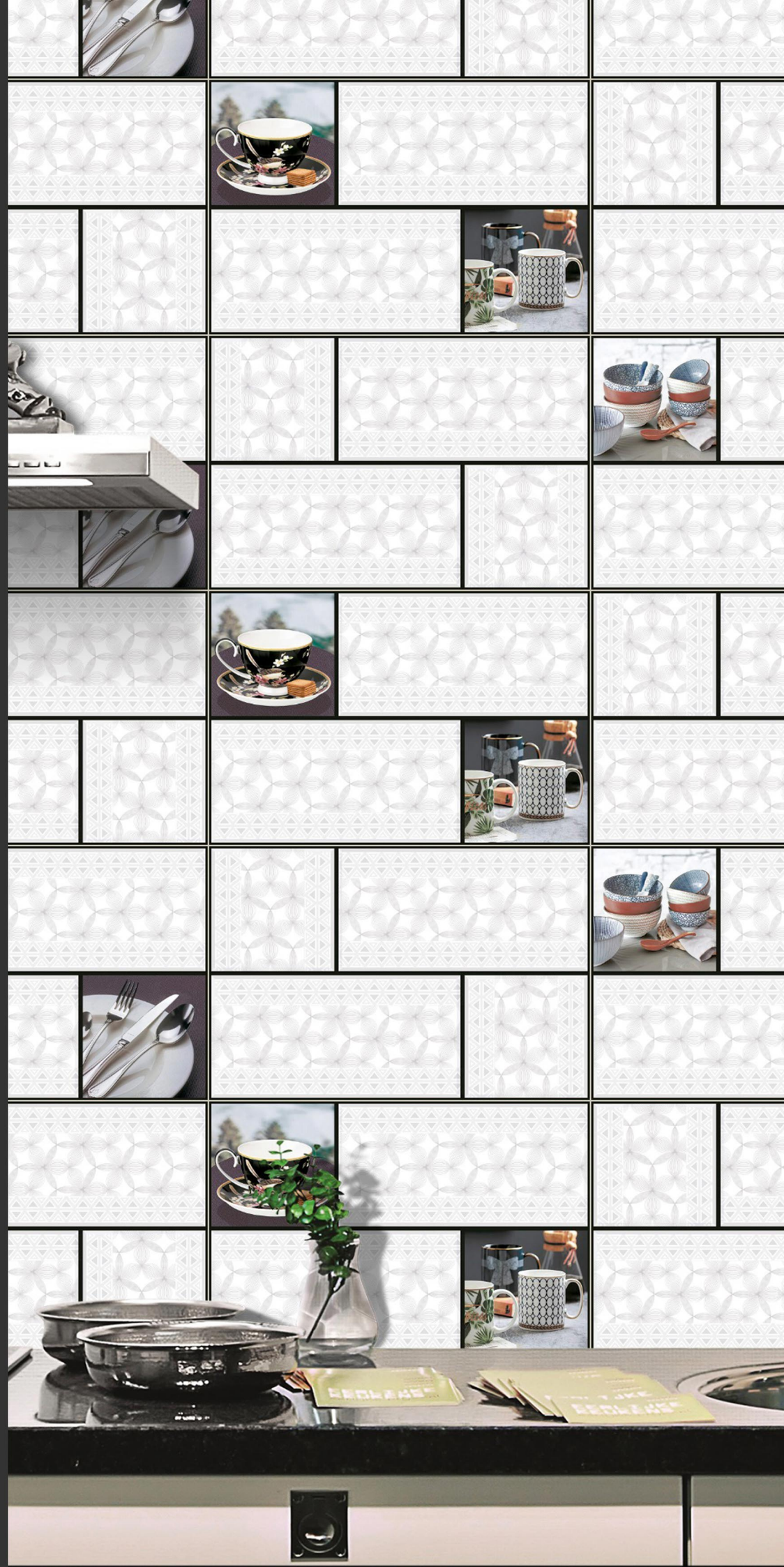
3135-LT

3135-HL-1

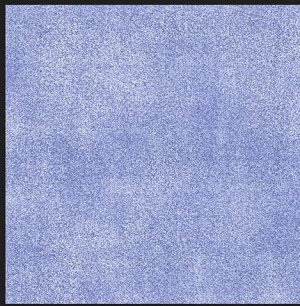
3135-HL-2

3135-LT

300x450 mm  
WALL TILES



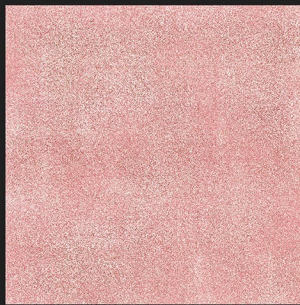




SP\_1



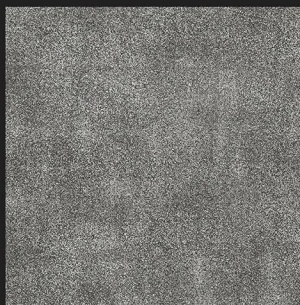
SP\_2



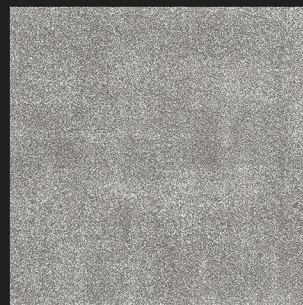
SP\_3



SP\_4



SP\_5



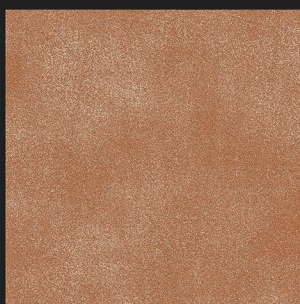
SP\_6



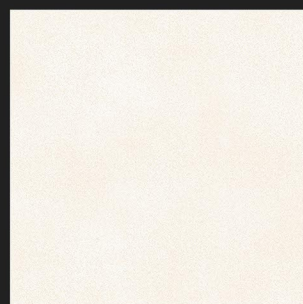
SP\_7



SP\_8



SP\_9



SP\_10



## TECHNICAL SPECIFICATION

Characteristics	Euro Standards EN-159/IS 13753	EXO Value
<b>DIMENSION &amp; SURFACE QUALITY</b>		
1) Dimension	± 0.5%	± 0.2%
2) Deviation in Thickness	± 0.6mm	± 0.2mm
3) Straightness of sides	± 0.3%	± 0.2%
4) Rectangularity	± 0.5%	± 0.3%
5) Surface Flatness	± 0.5%	± 0.3%
6) Surface Quality	Min 95%	Min 96%
<b>PHYSICAL PROPERTIES</b>		
1) Water Absorption	>10%	14-17%
2) Bending Strength	>150 kg/Cm <sup>2</sup>	200 - 250 Kg/Cm <sup>2</sup>
3) Scratch hardness(Mohs)	Min 3	Min 3
4) Craziing	1 Cycle	No Craziing at 5 Cycle
<b>CHEMICAL PROPERTIES</b>		
1) Staining Resistance	Min Class 2	Resistance to all Acids And Alkalies & Household Chemical, except Hydro Flouric Acid
2) Household Chemical	Min Class B	
<b>THERMALAL PROPERTIES</b>		
1) Thermal Shock	Resistant to 10 Cycle	CONFORMS
2) Thermal Expansion	Max-9E-06	CONFORMS

## PACKING DETAILS

Size	Thickness (Approx.)	Tiles Per Box	Coverage Area Per Box	Wt. of Box (Approx.)
600x300 mm	9 mm	5 pcs.	0.9 sq.m.	14.0 kgs.
450x300 mm	8 mm	6 pcs.	0.81 sq.m.	12.0 kgs.
300x300 mm	8 mm	9 pcs.	0.81 sq.m.	11.0 kgs.

## APPLICATION





OUR SURFACE



Glossy



Matt



Super White



Reactive



Luster

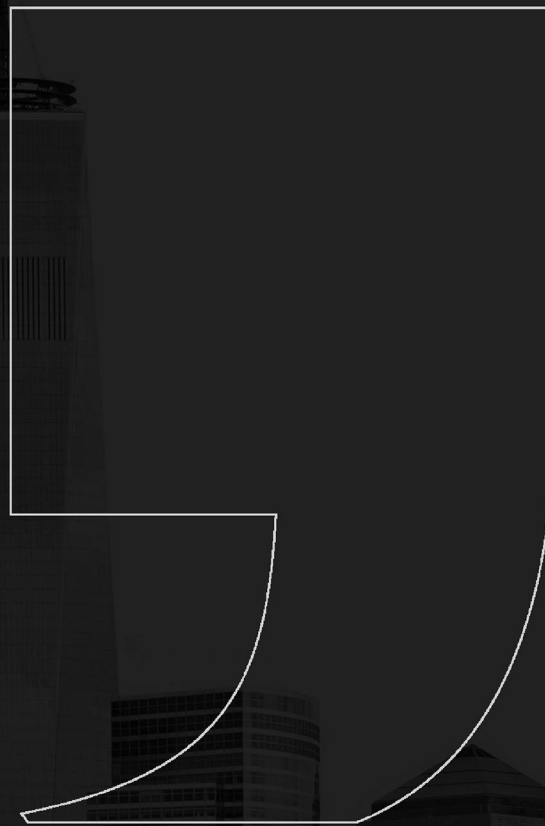


Glue



Sugar

# exotile



EXOTILE LLP

Survey No. 1291, Nr. Aniyari Chowkdi, NH-7, Halvad - Maliya Road, Tal.: Maliya - 363 630, Dist.: Morbi - Gujarat, INDIA.

+91 91183 12345 | info@exotile.in | www.exotile.in

FOLLOW US

